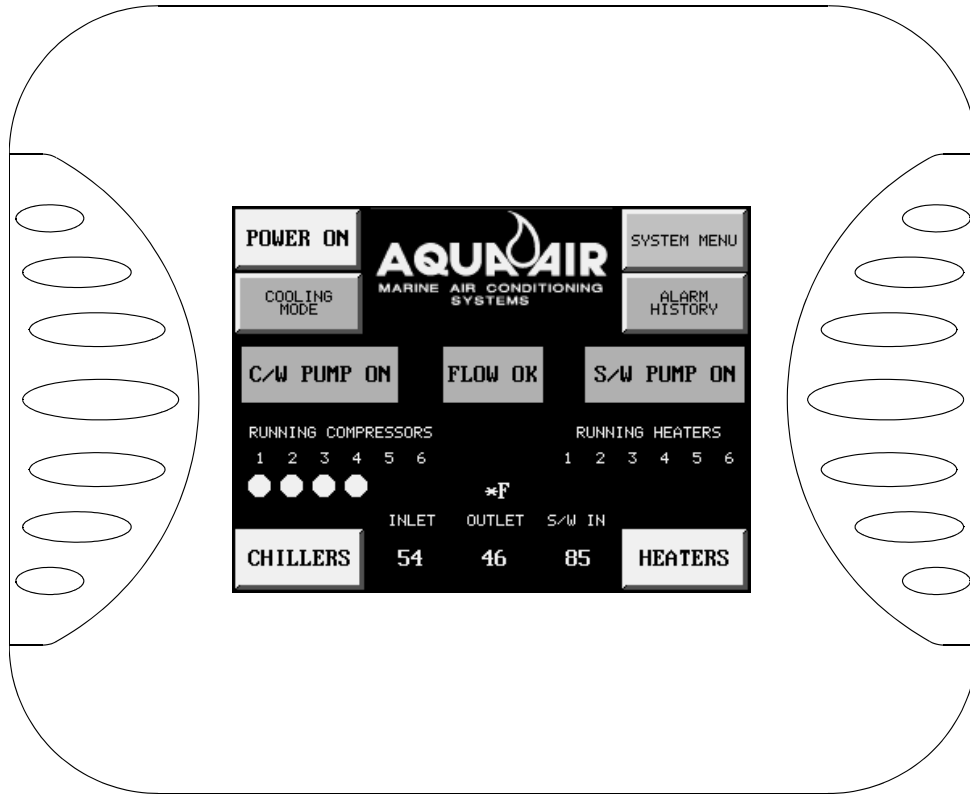


# Touchscreens

2

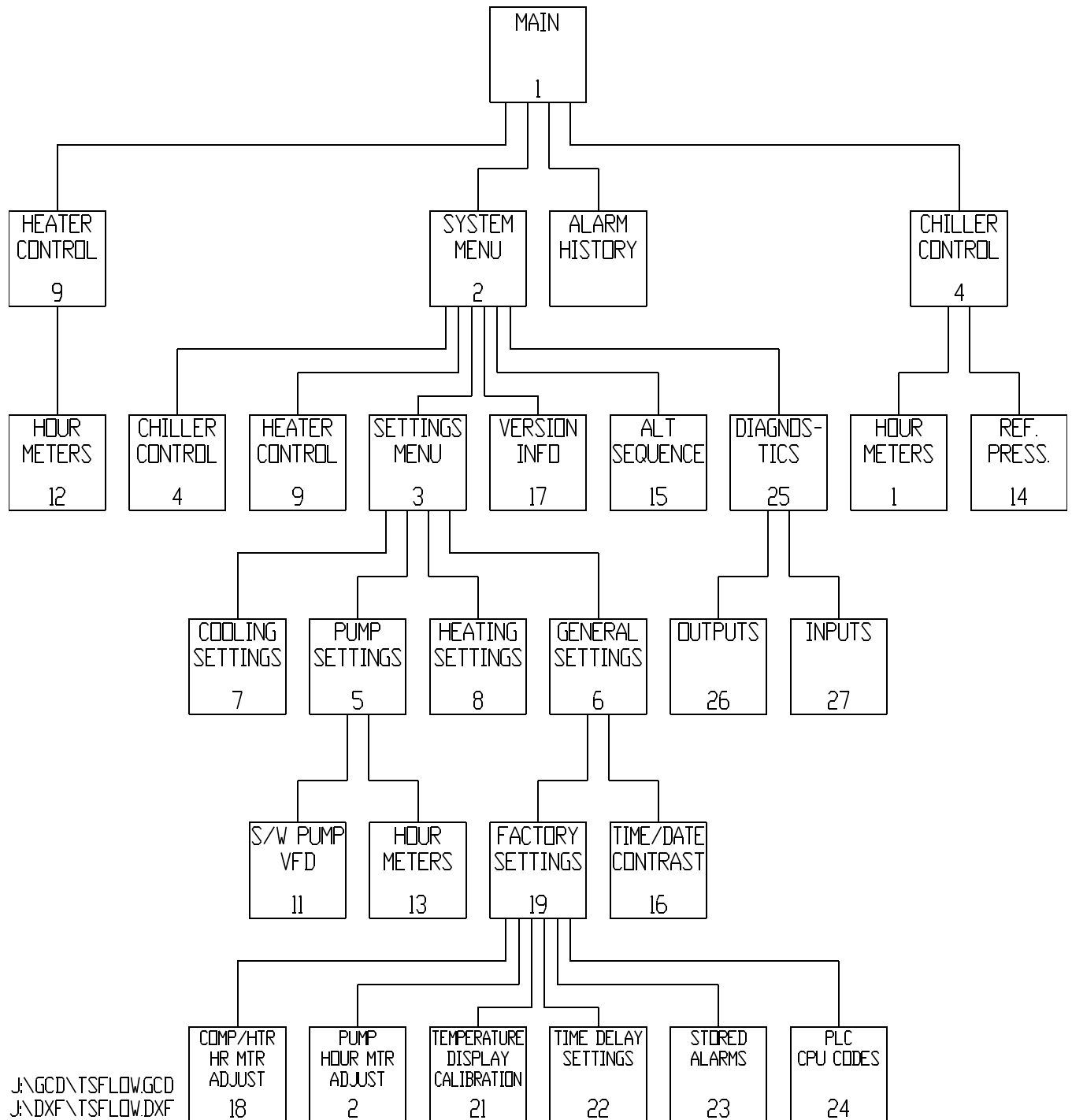
# Touchscreen Interface



The Aqua-Air TS/PLC Series Touchscreen that is located on the front of the control panel for your chiller unit is what is known in the Industrial Control field as a HMI ( Human-Machine Interface) unit. It provides a way to graphically represent the pushbuttons, indicator lights, numeric indicators, gauges and other indicating devices necessary to allow you to operate the unit. It is the component that interfaces between you, the operator, and the PLC which is actually controlling the components of the chiller.

The Touchscreen is comprised of not just one screen but many. One screen may lead to a dozen others or it may be the last in a line of screens. On the following page is a graphical representation of how all of the different screens are connected.

# Touchscreen Screen Arrangement



i:\wordpfct\plctouchscreen screen arrangement.wpd

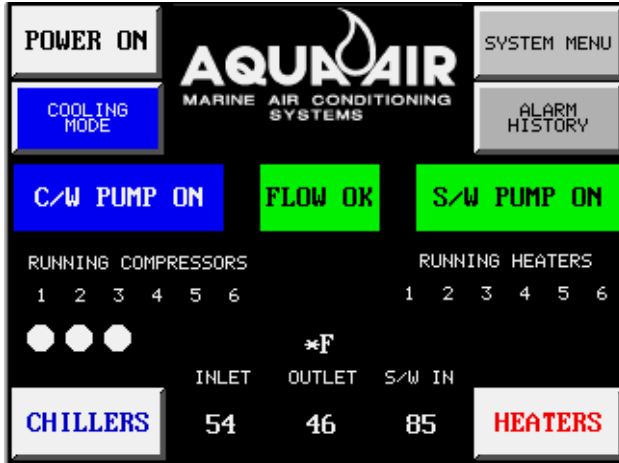
# Touchscreen Screen Listing

Screen Number	Description	Customer Use = C Factory Use Only = F	Notes
1	Main Screen	C	
2	System Menu	C	
3	Settings Menu	C	
4	Chiller Control	C	
5	Pump Settings	C	
6	General Settings	C	
7	Cooling Settings	C	
8	Heating Settings	C	
9	Heater Control	C	
10	Chiller Hour Meters	C	
11	Seawater Pump Frequency Drive Control	C	1
12	Heater Hour Meters	C	
13	Pump Hour Meters	C	
14	Refrigerant Pressures	C	2
15	Alternating Sequence	C	
16	Time, Date & Contrast Settings	C	
17	Version Information	C	
18	Compressor & Heater Hour Meter Adjustment	F	
19	Factory Settings Menu	F	
20	Pump Hour Meter Settings	F	
21	Temperature Display Calibration	F	
22	Time Delay Settings	F	
23	Stored Alarms	F	
24	PLC CPU Error Codes	F	
25	Diagnostics Menu	C	
26	Outputs	C	
27	Inputs	C	

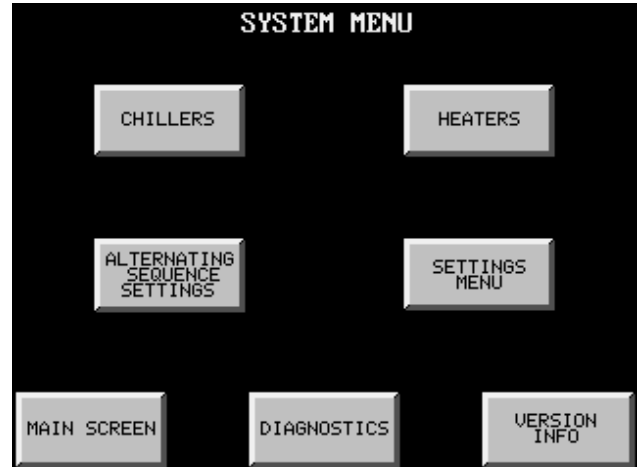
Note 1 Only available on units configured for use with variable frequency drives on seawater pumps

Note 2 Only available on units with the refrigerant pressure transducer option

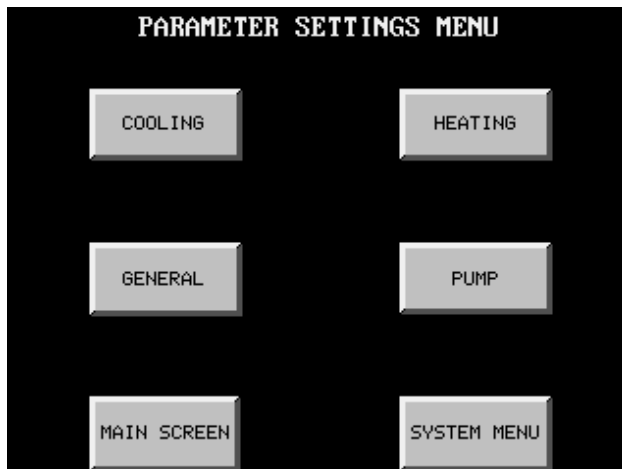
# PLC Touchscreen Screens



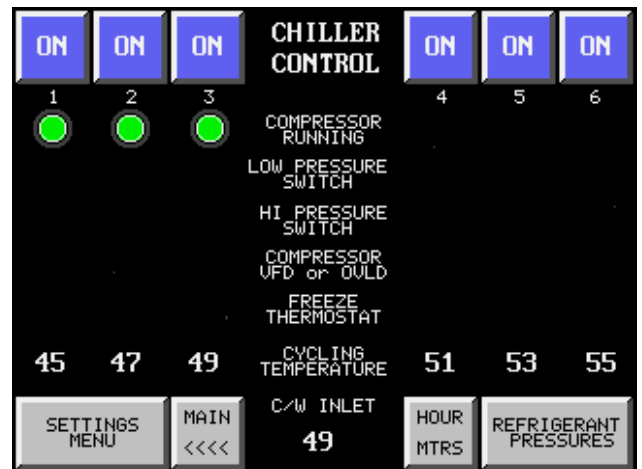
1. Main Screen



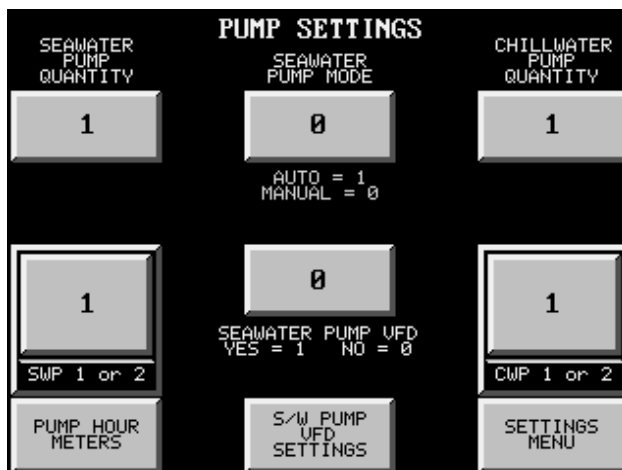
2. System Menu



3. Settings Menu



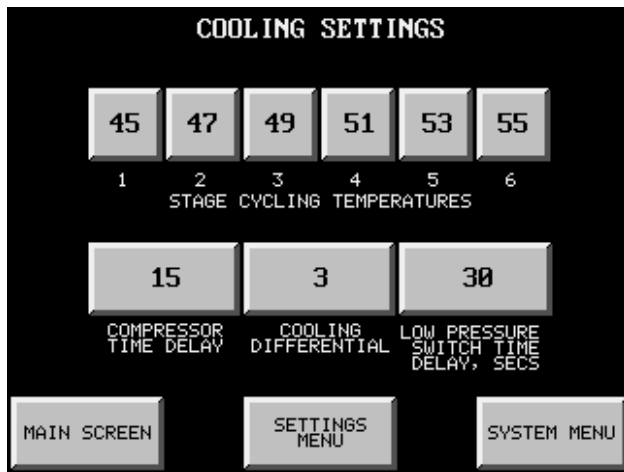
4. Chiller Control



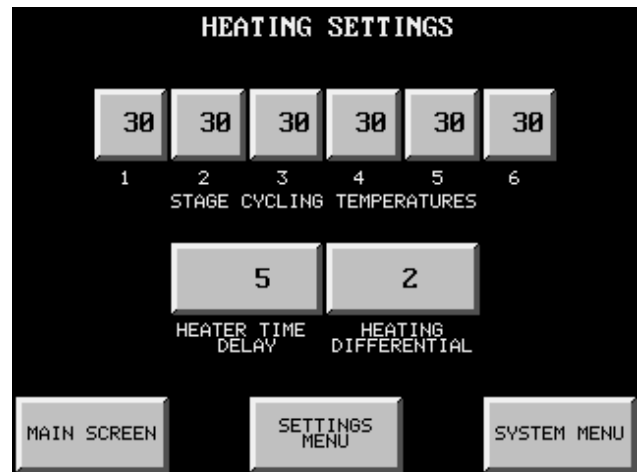
5. Pump Settings



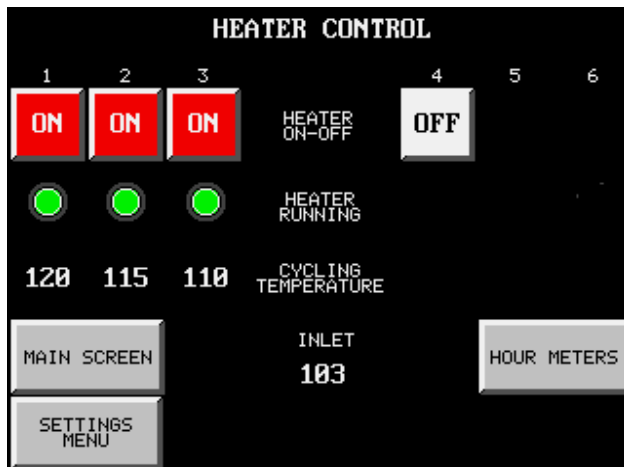
6. General Settings



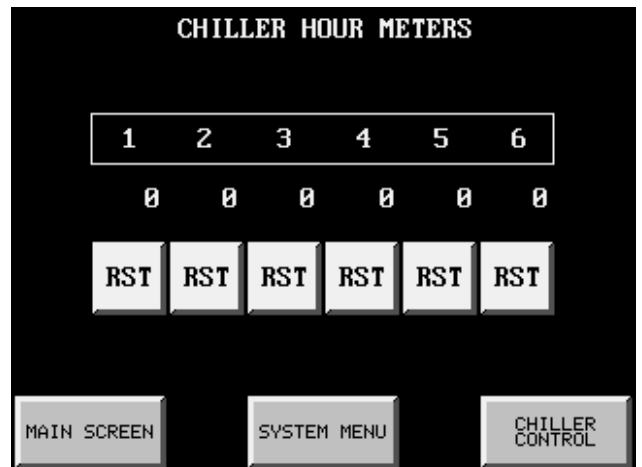
**7. Cooling Settings**



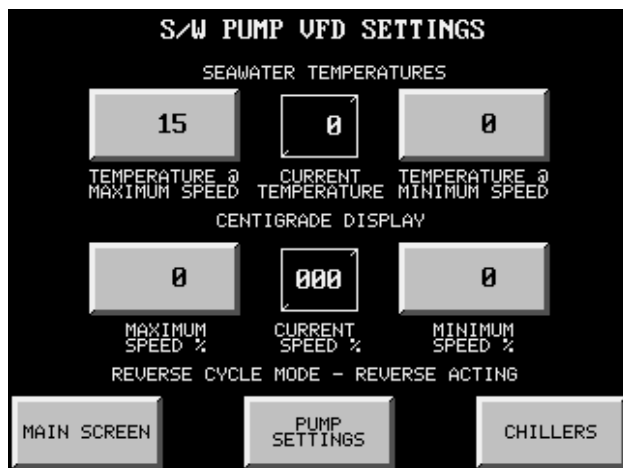
**8. Heating Settings**



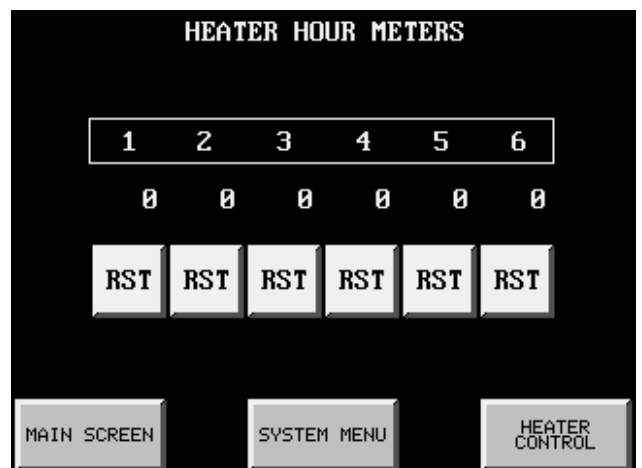
**9. Heater Control**



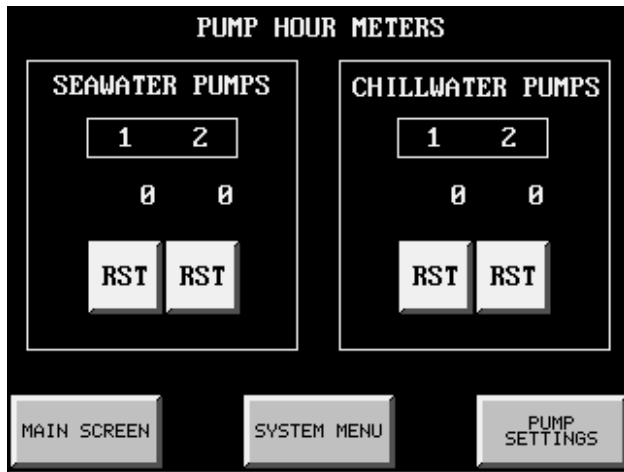
**10. Chiller Hour Meters**



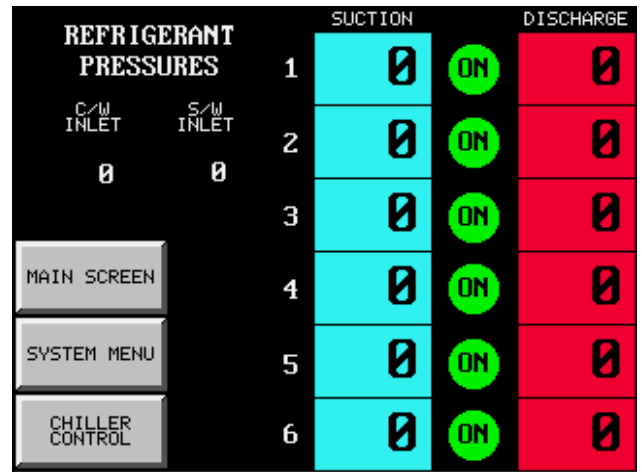
**11. Seawater Pump VFD Control**



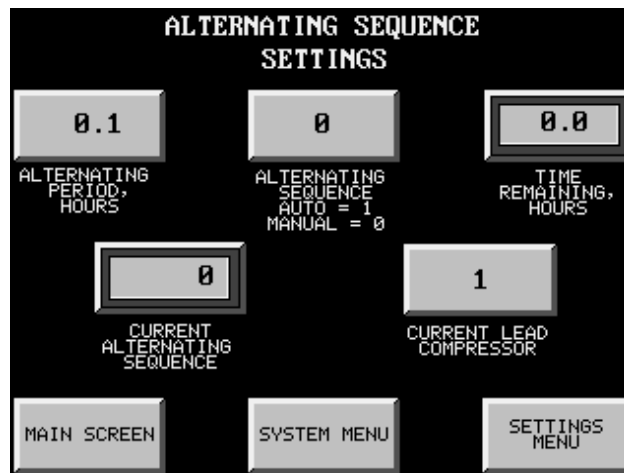
**12. Heater Hour Meters**



13. Pump Hour Meters



14. Refrigerant Pressures



15. Alternating Sequence Settings



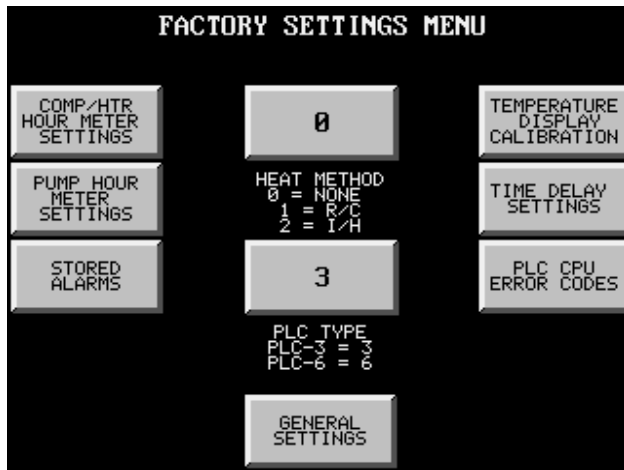
16. Time & Contrast Settings



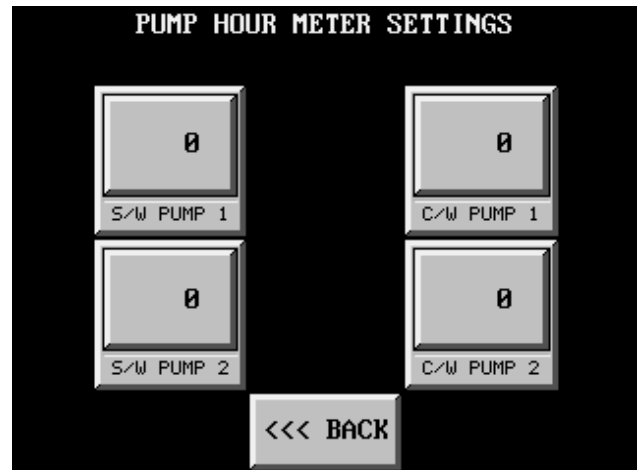
17. Version Information



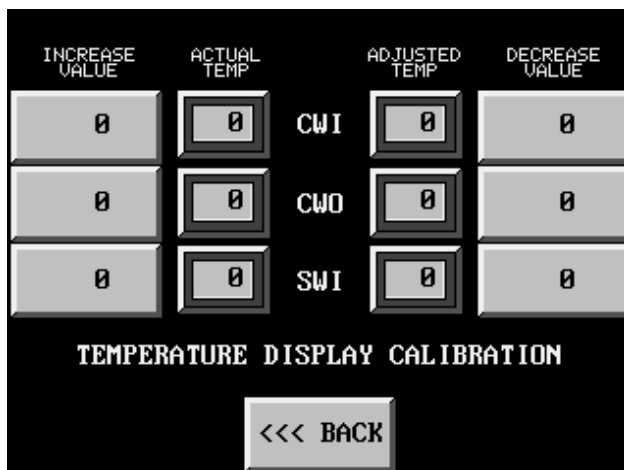
18. Compressor & Heater Hour Meter Adjustments



19. Factory Settings Menu



20. Pump Hour Meter Settings



21. Temperature Display Calibration



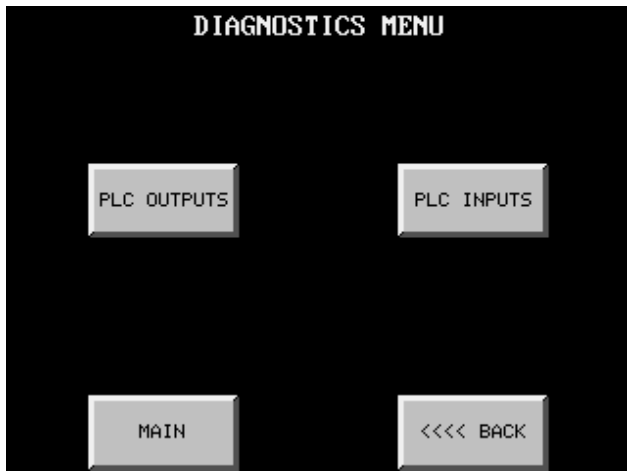
22. Time Delay Settings



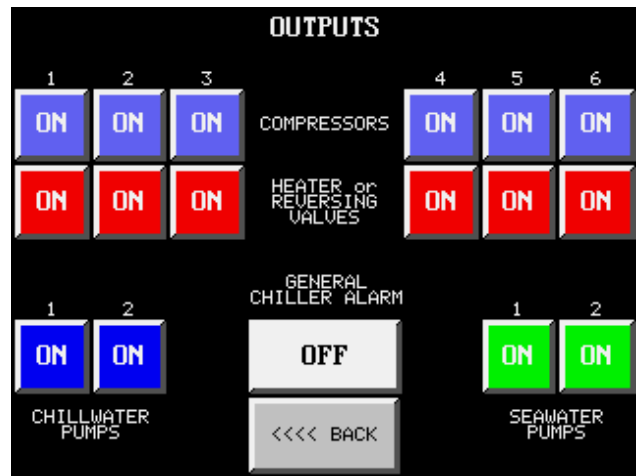
23. Stored Alarms



24. PLC CPU Error Codes



25. Diagnostics Menu



26. PLC Outputs



27. PLC Inputs