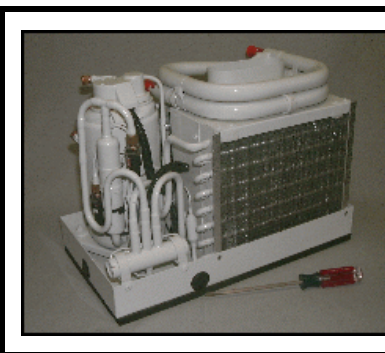


As the technology leader, and the oldest name in the marine air conditioning industry, we have accepted the challenge of creating a new design that is not only smaller than the units previously available, but more importantly, more efficient than anything in it's class. It's called **mini-kool** and it's built by the company whose name is synonymous with high quality and durability...**Aqua-Air!**



**Features:**

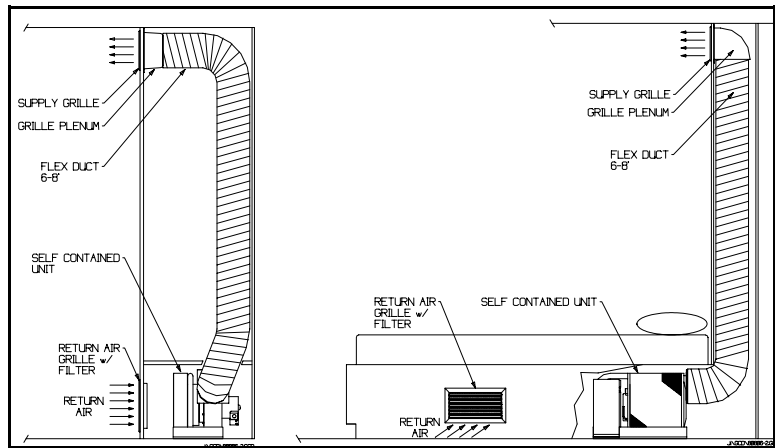
- < Compact, low profile units are the smallest available. STR-05 is the **"Worlds Smallest"**.
- < Designed and engineered for maximum efficiency with open mounted condenser.
- < Quiet, high efficiency rotary (on 5K-16K), and scroll compressors (on 24K).
- < Aqua-Air **TW2** digital microprocessor control and mechanical control versions available.
- < Rugged yet light weight design.
- < High and Low pressure switches for protection of valuable equipment are standard on all units and interface with **TW2** digital controls.
- < High capacity squirrel cage blowers provide excellent air flow with quiet operation.
- < Blowers are fully insulated and rotatable for variability in installation and ducting.
- < Corrosion resistant, galvanized and coated condensate pan has multiple drain locations.
- < Simple plug in of control panels on factory installed connector cables.
- < Double vibration insulation on all models.
- < All models are available with standard R-22 or new environmentally friendly R-407C gas.
- < 90-10 cupronickel condensers are corrosion resistant for low maintenance and long life.
- < 2 year warranty on the entire new system when used with **TW2** control.



**mini-kool** model STR-05 is the **"Worlds Smallest"** full featured marine air conditioning unit. It includes all the features of the **mini-kool** line, like reverse cycle and electronic control and operates at only 3.5 amps. At less than 1 cubic foot in overall dimension, it requires 32% less installation space than it's nearest competitor. This design features a compact and very quiet blower with selectable vertical or horizontal outlet. Controls plug in to the factory installed leads, and complete installation kits are available.

The **mini-kool** unit is commonly used in new installations, however it is very well suited to the replacement or retrofitting of an older, less efficient or obsolete unit, or as an upgrade. This self contained unit is a refrigerant to air heat exchanger that has all the major components mounted on one chassis. It is installed in the area of the boat that is to be heated or cooled.

Basic refrigeration theory dictates that opposite heat exchanges occurring in close proximity have a canceling effect, which translates to efficiency loss. True to this principle, the **mini-kool** achieves maximum efficiency through the application of a correctly sized seawater condenser located in the proper orientation to the unit's evaporator coil. By choosing **mini-kool**, you know you're getting the highest efficiency available!



Typical **mini-kool** application

Technical Specifications		S*R-05	S*R-07	S*R-10	S*R-12	S*R-16	S*S-24C
Capacity	BTU/H KCAL/H	5,000 1,260	7,000 1,764	10,000 2,520	12,000 3,024	16,000 4,032	24,000 6,048
Air Flow	CFM m <sup>3</sup> /HR	170 290	270 560	330 560	400 679	533 904	800 1358
Amp Draw	115 VAC 230 VAC	3.5 -	6.3 3.0	8.0 4.0	10.4 4.8	11.7 5.6	- 8.4
Power	Watts	380	685	877	1051	1298	2328
Blower Adapter Diameter	IN MM Part #	4 102 included	5 127 HA5	5 127 HA5	6 152 HA6	6 152 HA616	7 178 AQHA7-24
Minimum Return Air Grille Size	IN <sup>2</sup> CM <sup>2</sup>	64 413	72 465	100 645	120 775	144 930	225 1450
Minimum Supply Air Grille Size	IN <sup>2</sup> CM <sup>2</sup>	13 84	40 258	48 310	60 387	72 465	120 775
Height (max.)	IN CM	11.38 28.90	12.13 30.8	12.00 30.5	13.38 33.9	13.38 33.9	17.88 45.4
Width (pan)	IN CM	16.50 41.9	18.00 45.7	20.00 50.8	20.00 50.8	20.00 50.8	24.63 62.5
Depth (pan)	IN CM	9.00 22.8	9.63 24.4	10.63 27.0	10.625 27.0	12.00 30.5	15.25 38.7
Blower Motor Overhang	IN CM	0 0	3.43 8.3	3.75 9.5	3.75 9.5	4.0 10.2	3.5 8.9
Required Seawater Flow	GPH LPH	100 390	140 540	200 760	240 915	320 1220	480 1825
Net Weight	LBS / KG	45.0 / 20.5	56.0 / 25.5	57.0 / 25.9	61.0 / 27.7	68.0 / 30.9	120 / 54.5
Ship Weight	LBS / KG	49.0 / 22.3	63.0 / 28.7	64.0 / 29.1	68.0 / 30.9	75.0 / 34.1	130 / 59.1

\*T = TW2 Digital Control (STR), M = Mechanical Control (SMR)

l:\wordpft\80706.wpd

1. Add 'C' to the end of the model number for 230 VAC, 'CK' for 220 VAC 50 Hz.
2. Standard units are 115 V, 50/60Hz and 230V, 50/60Hz, and operate at rated capacities at 60 Hz. Standard unit capacity is reduced by 17% when operated at 50 Hz. For full capacity units at 50Hz, order 'CK' models.
3. STR(S), SMR(S), STS(S) and SMS(S) = (S)traight cool models.
4. All models are available with R-407C refrigerant (G) in compliance with ODP (ozone depleting potential) requirements of the Montreal Protocol.

**AQUA-AIR MANUFACTURING, division of the James D. Nall Co., Inc.**  
**1050 East 9th Street, Hialeah, Florida 33010 U.S.A.**  
**Toll Free: 800-457-3928 Local: 305-884-8363 Fax: 305-883-8549 www.aquair.com**