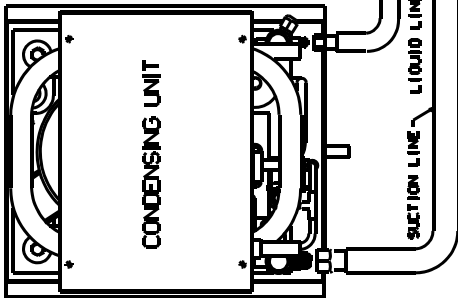


Refrigerant Line Set Sizing

SYSTEMS USING ONE
CONDENSING UNIT &
ONE FAN COIL



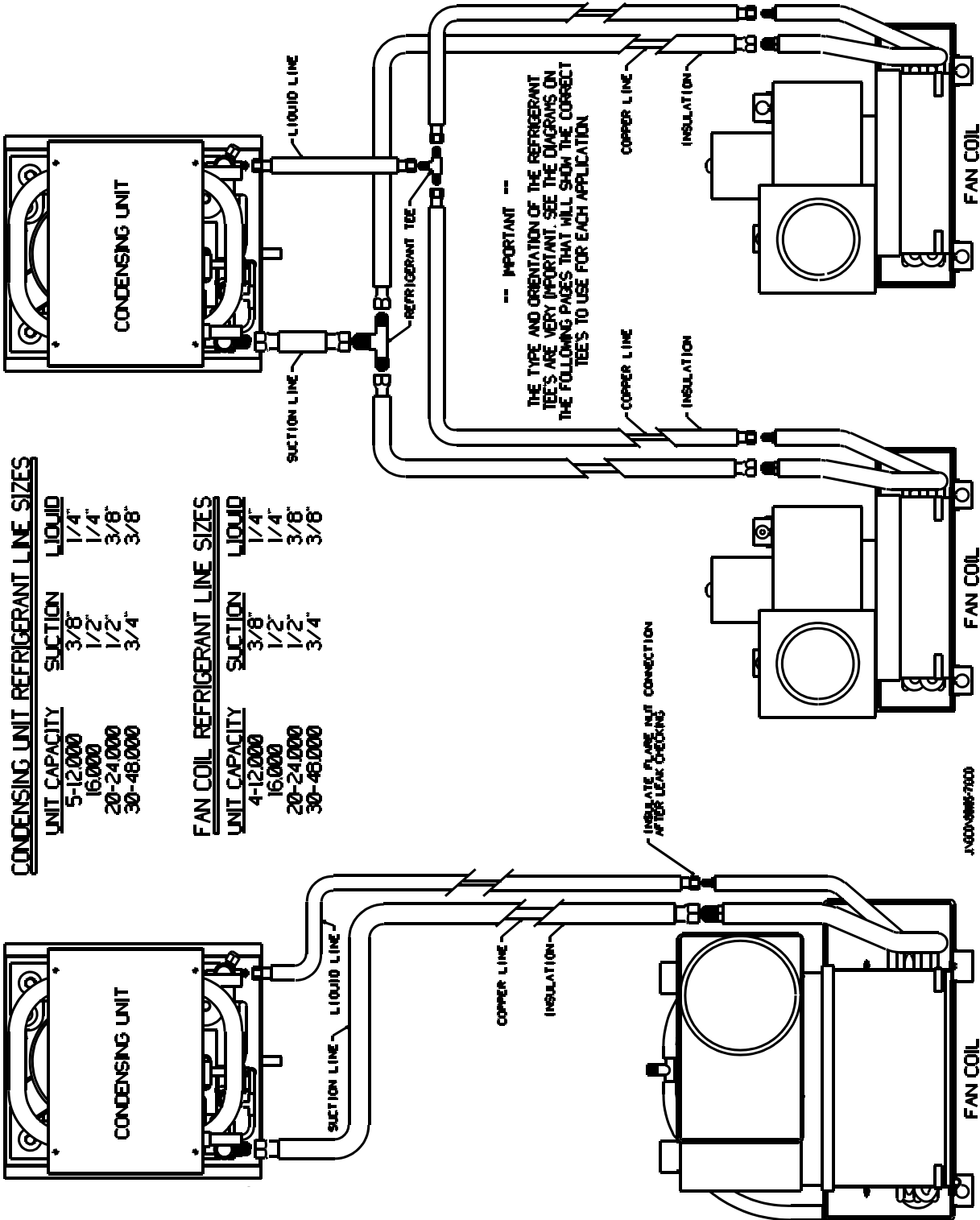
CONDENSING UNIT REFRIGERANT LINE SIZES

UNIT CAPACITY	SUCTION	LIQUID
5-12,000	3/8"	1/4"
16,000	1/2"	1/4"
20-24,000	1/2"	3/8"
30-48,000	3/4"	3/8"

FAN COIL REFRIGERANT LINE SIZES

UNIT CAPACITY	SUCTION	LIQUID
4-12,000	3/8"	1/4"
16,000	1/2"	1/4"
20-24,000	1/2"	3/8"
30-48,000	3/4"	3/8"

SYSTEMS USING ONE
CONDENSING UNIT &
TWO FAN COILS



Tee Arrangements for Refrigeration Line Sets on Multiple Evaporator Systems

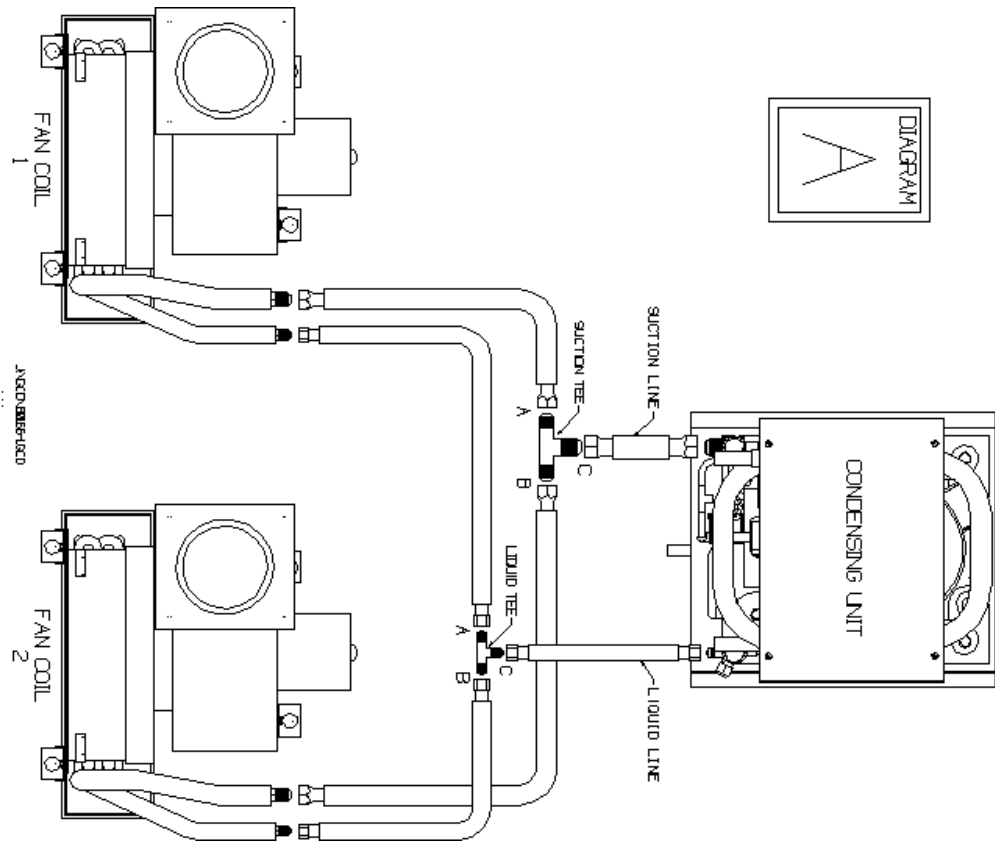
The purpose of this guide is to show some of the recommended line set and refrigeration tee arrangements for different size condensing unit and evaporator combinations.

The important thing to note on multiple evaporator systems is the orientation of the tee's when you have an evaporator capacity mismatch i.e. a 4,000 and 8,000 BTU/H fan coil connected to a 12,000 BTU/H condensing unit (shown below right).

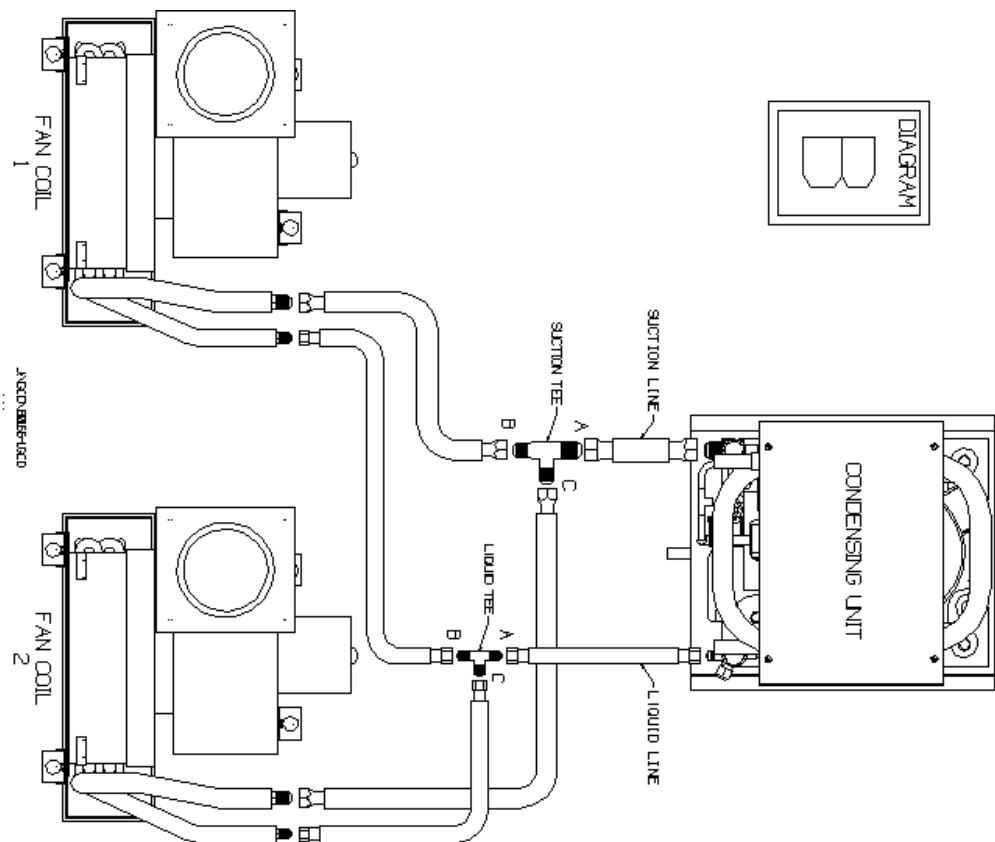
See the drawing on the next page for Diagram A and B.

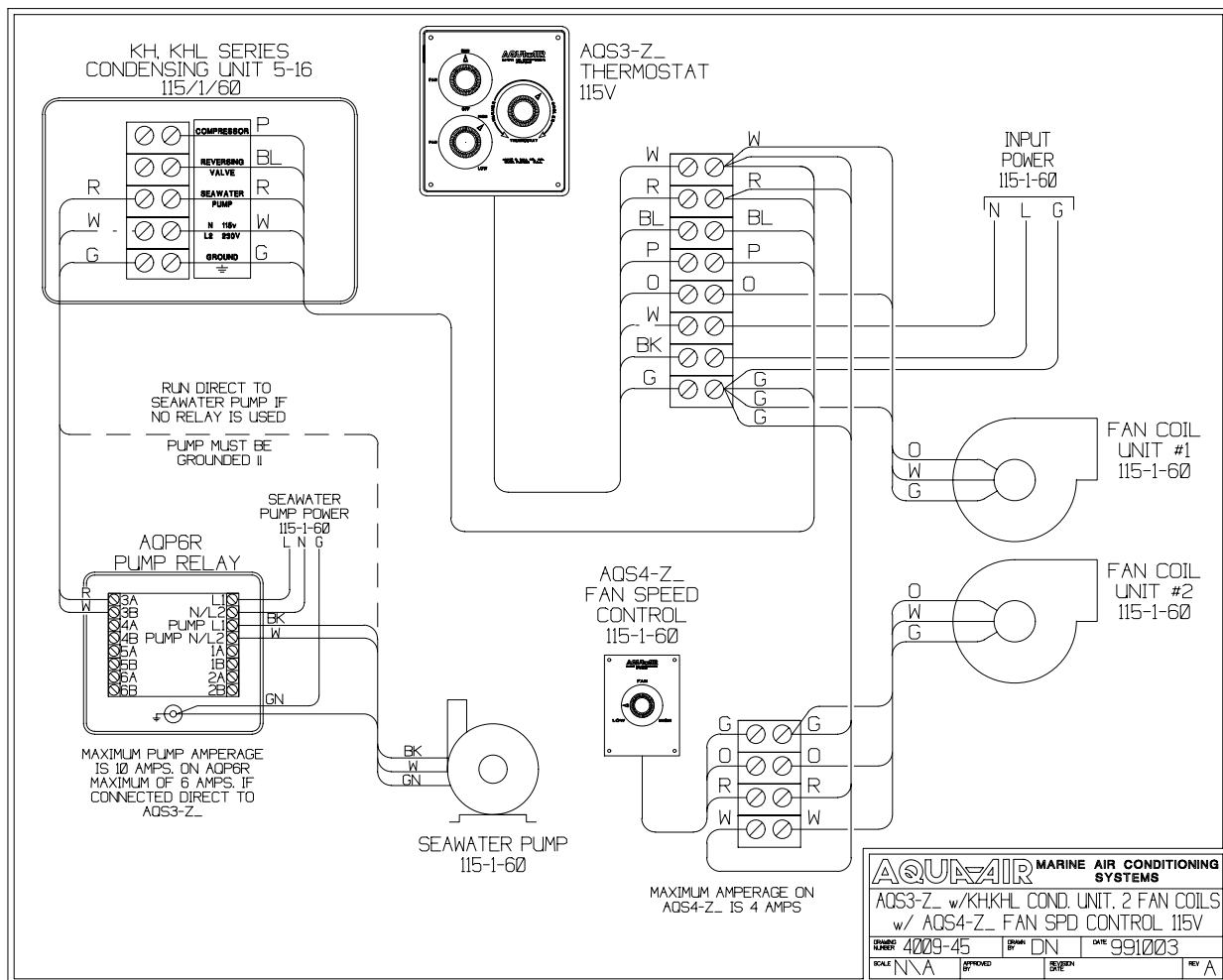
CONDENSING UNIT	FAN COIL		DIAGRAM	SUCTION LINE TEE				LIQUID LINE TEE			
	1	2		PART NUMBER	A	B	C	PART NUMBER	A	B	C
10,000	5,000	5,000	A	131210-06	3/8"	3/8"	3/8"	131209-04	1/4"	1/4"	1/4"
12,000	7,000	5,000	B	131210-06	3/8"	3/8"	3/8"	131209-04	1/4"	1/4"	1/4"
	8,000	4,000	B	131210-06	3/8"	3/8"	3/8"	131209-04	1/4"	1/4"	1/4"
16,000	8,000	8,000	A	131310-06	3/8"	3/8"	1/2"	131209-04	1/4"	1/4"	1/4"
	12,000	4,000	B	131310-08	1/2"	3/8"	3/8"	131209-04	1/4"	1/4"	1/4"
20,000	10,000	10,000	A	131310-06	3/8"	3/8"	1/2"	131301-04	1/4"	1/4"	3/8"
	12,000	8,000	B	131310-08	1/2"	3/8"	3/8"	131301-06	3/8"	1/4"	1/4"
	16,000	4,000	B	131311-13	1/2"	1/2"	3/8"	131301-06	3/8"	1/4"	1/4"
24,000	12,000	12,000	A	131310-06	3/8"	3/8"	1/2"	131301-04	1/4"	1/4"	3/8"
	16,000	8,000	B	131311-13	1/2"	1/2"	3/8"	131301-06	3/8"	1/4"	1/4"
	20,000	4,000	B	131311-13	1/2"	1/2"	3/8"	131310-04	3/8"	3/8"	1/4"
30,000	20,000	10,000	B	131312-01	3/4"	1/2"	3/8"	131310-04	3/8"	3/8"	1/4"
36,000	20,000	16,000	B	131311-12	3/4"	1/2"	1/2"	131310-04	3/8"	3/8"	1/4"
	24,000	12,000	B	131312-01	3/4"	1/2"	3/8"	131310-04	3/8"	3/8"	1/4"

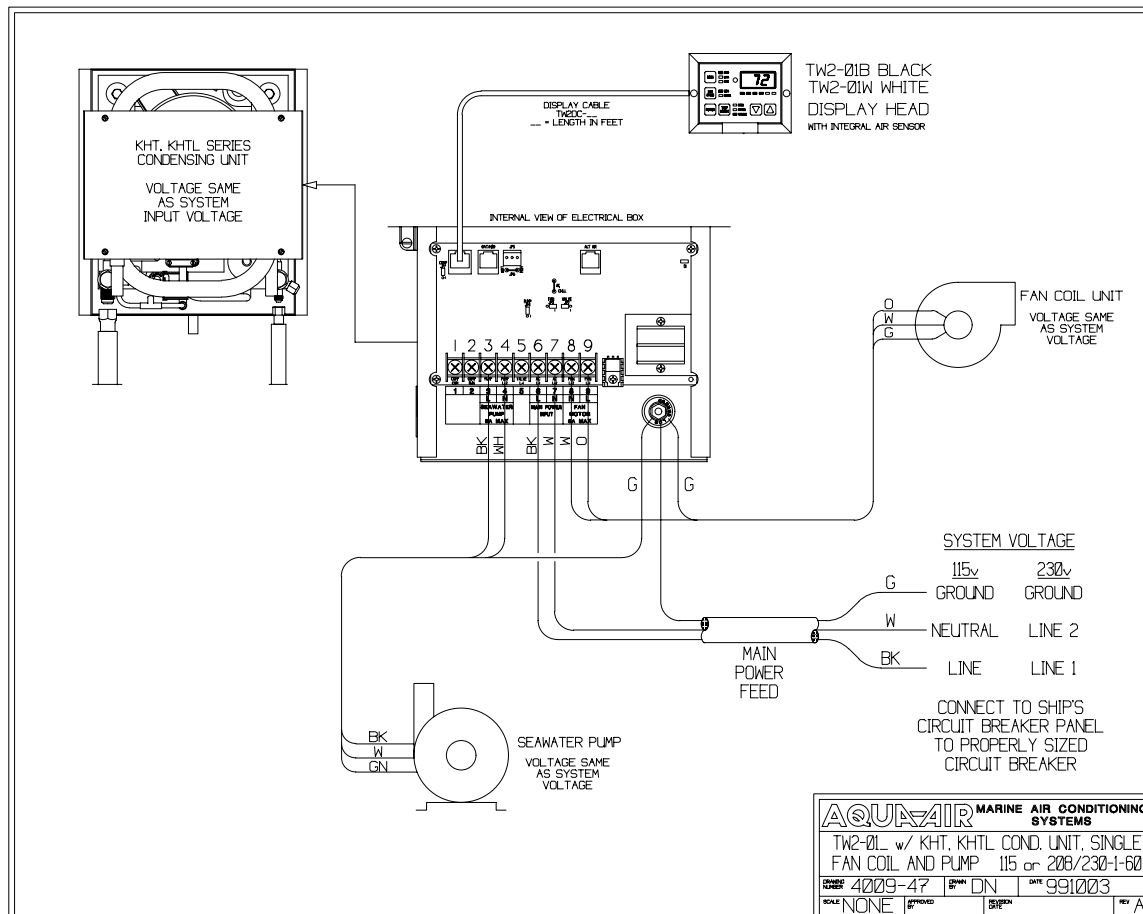
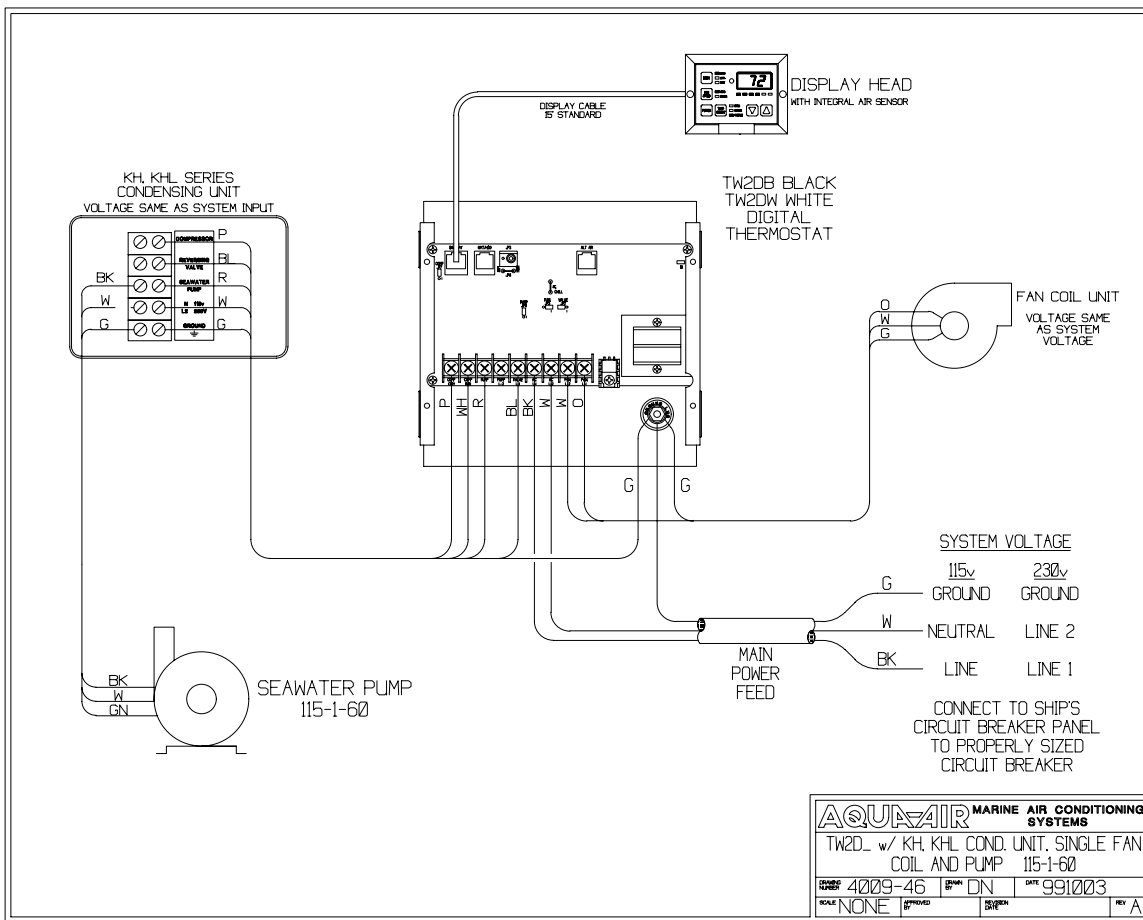
SINGLE CONDENSING UNIT
WITH TWO EQUAL
CAPACITY FAN COILS

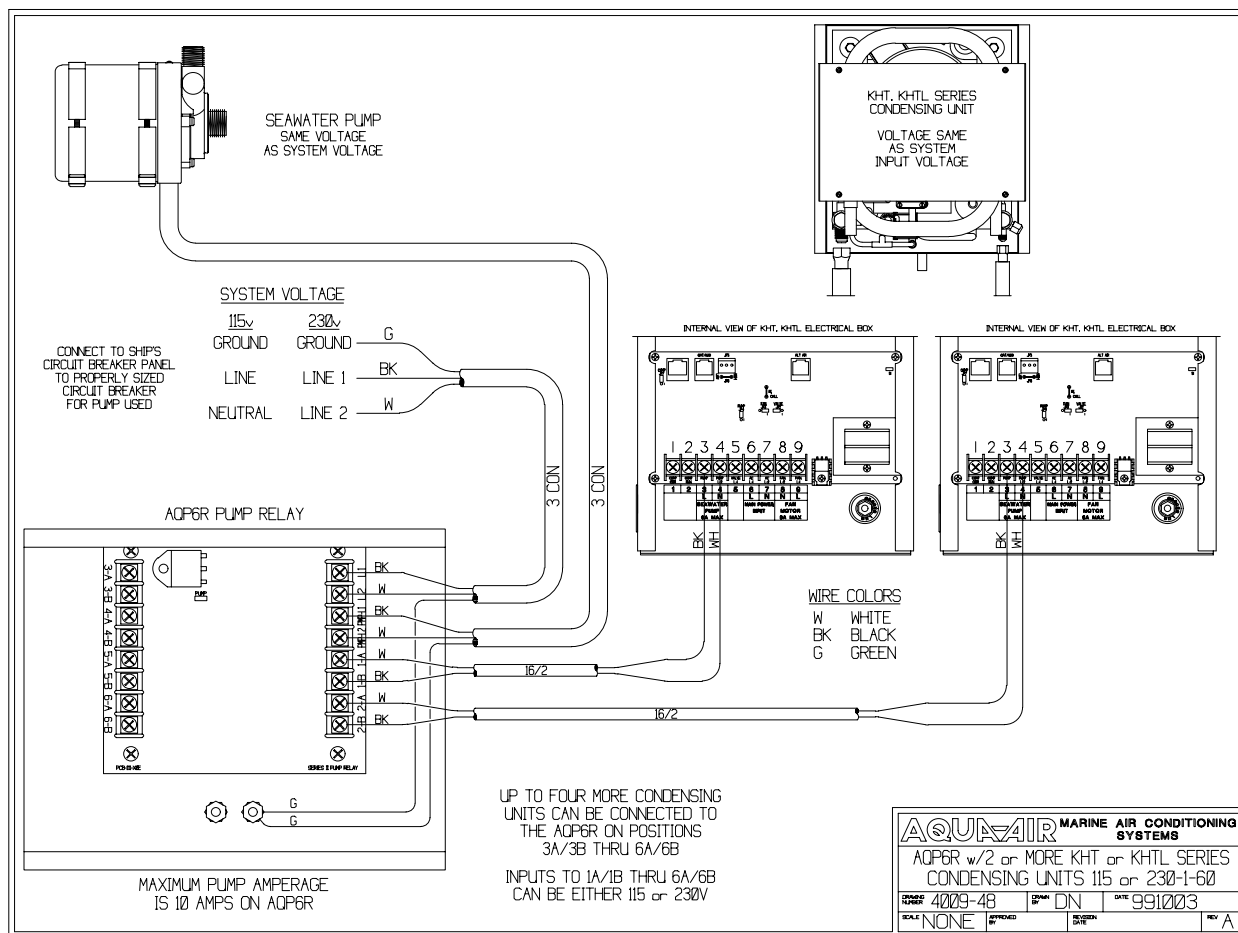


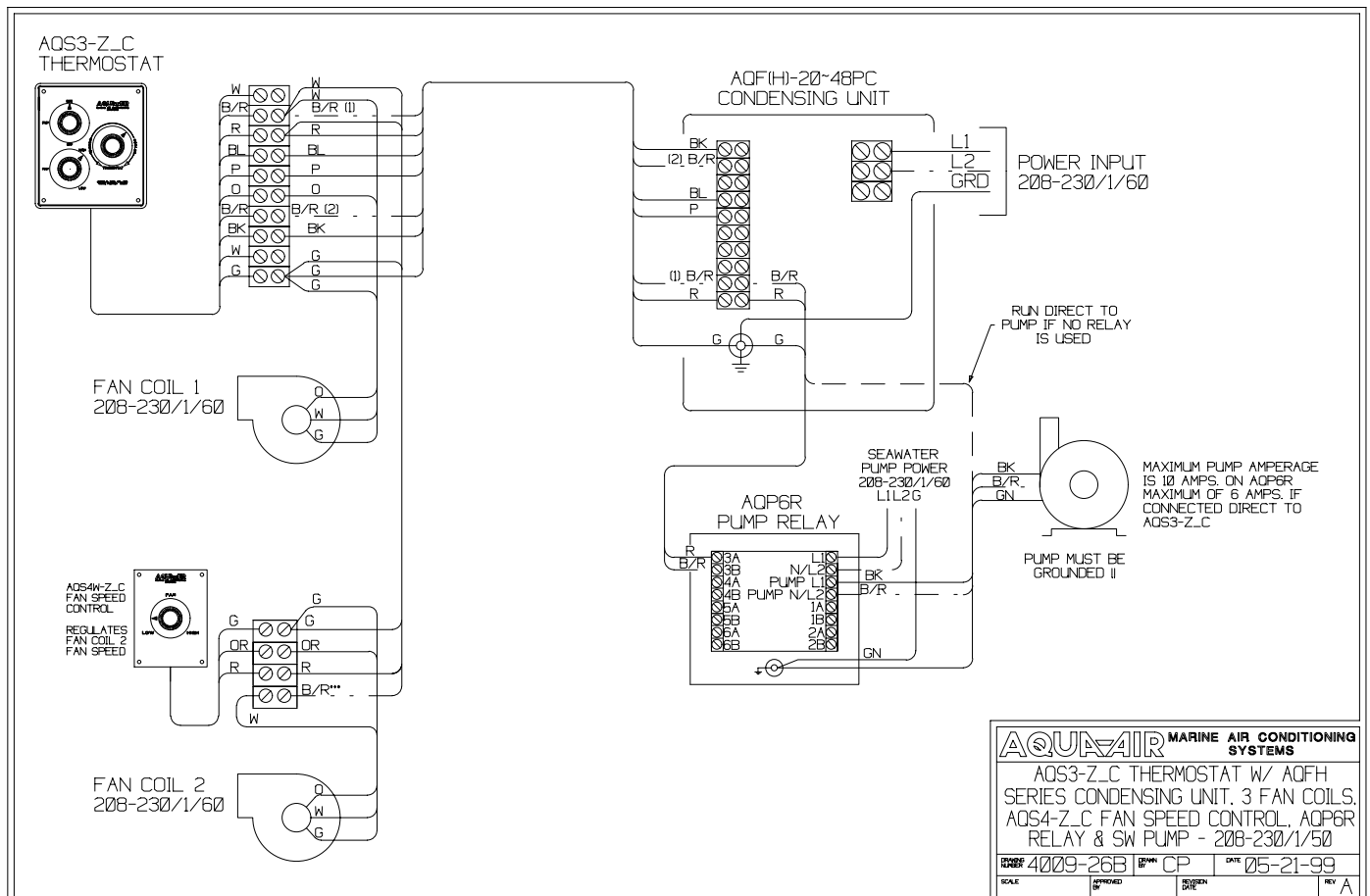
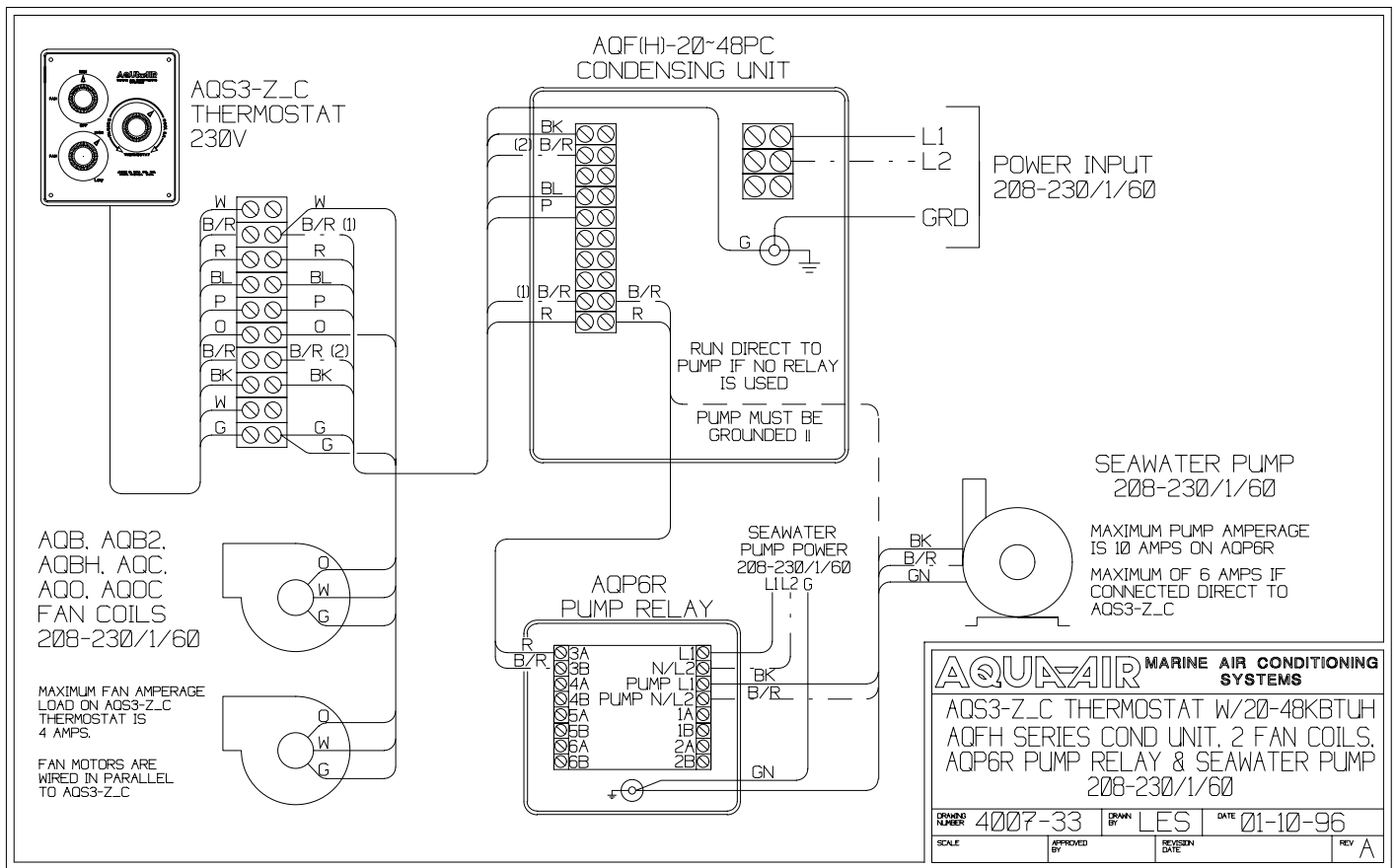
SINGLE CONDENSING UNIT
WITH TWO DIFFERENT
CAPACITY FAN COILS

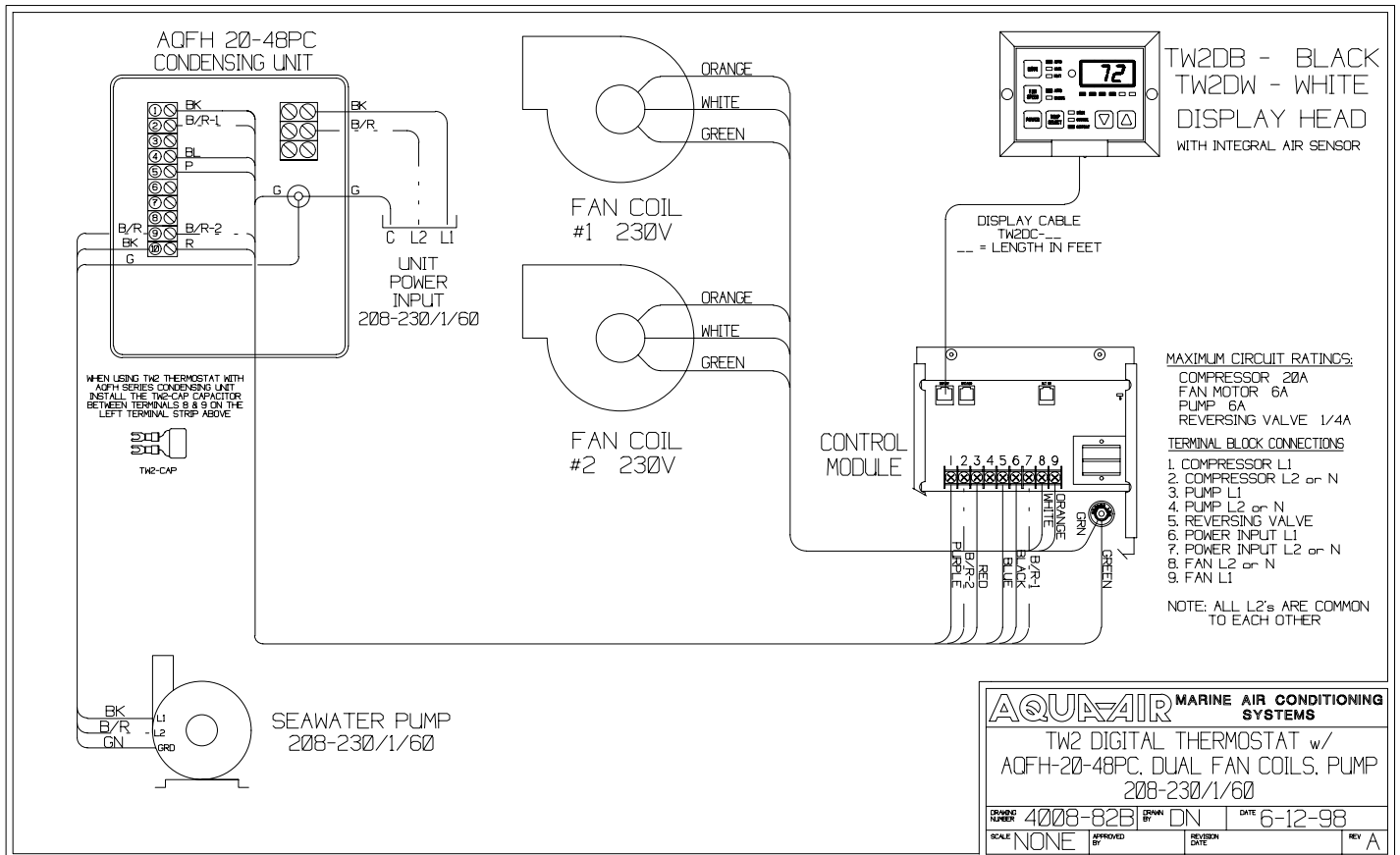
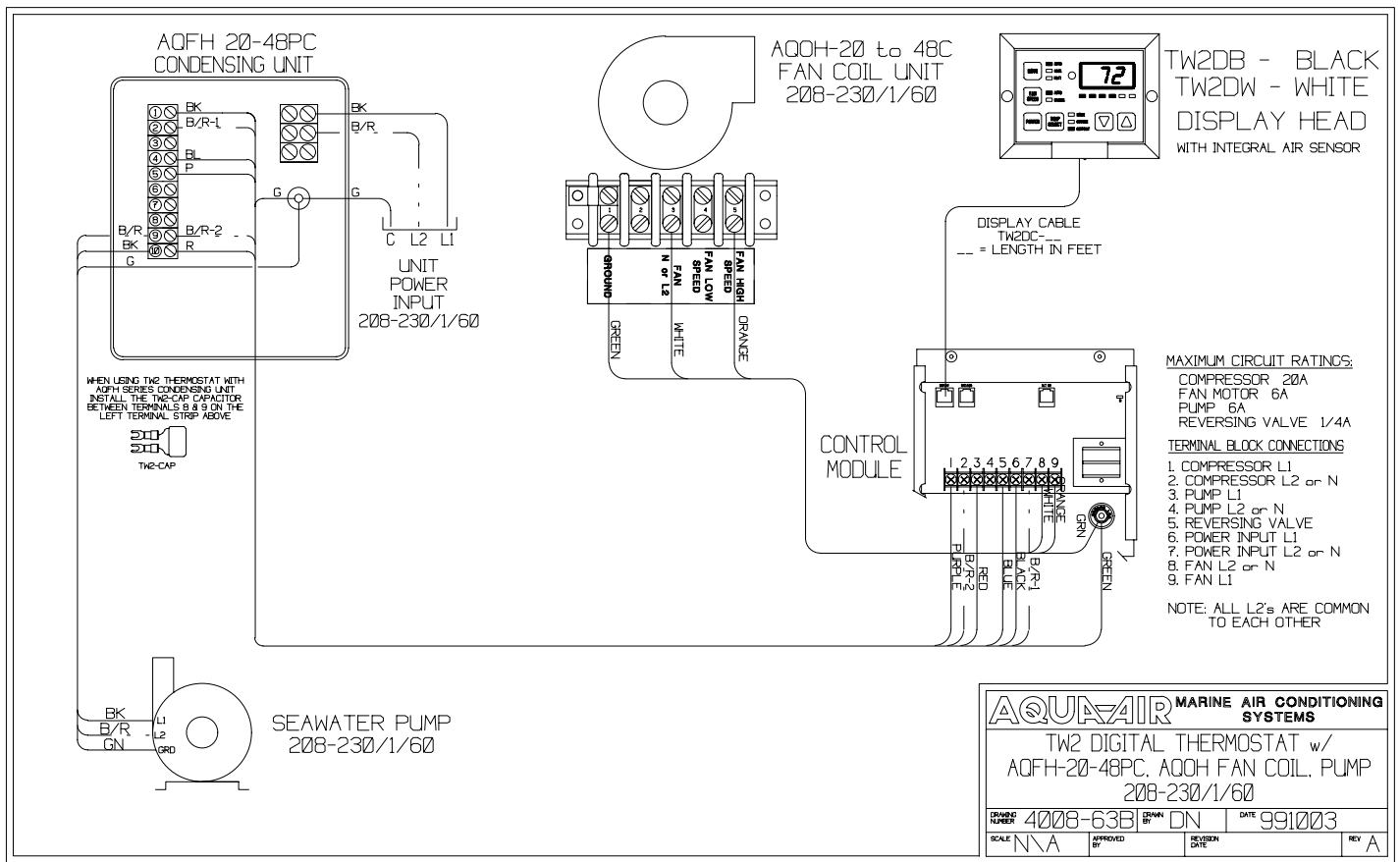


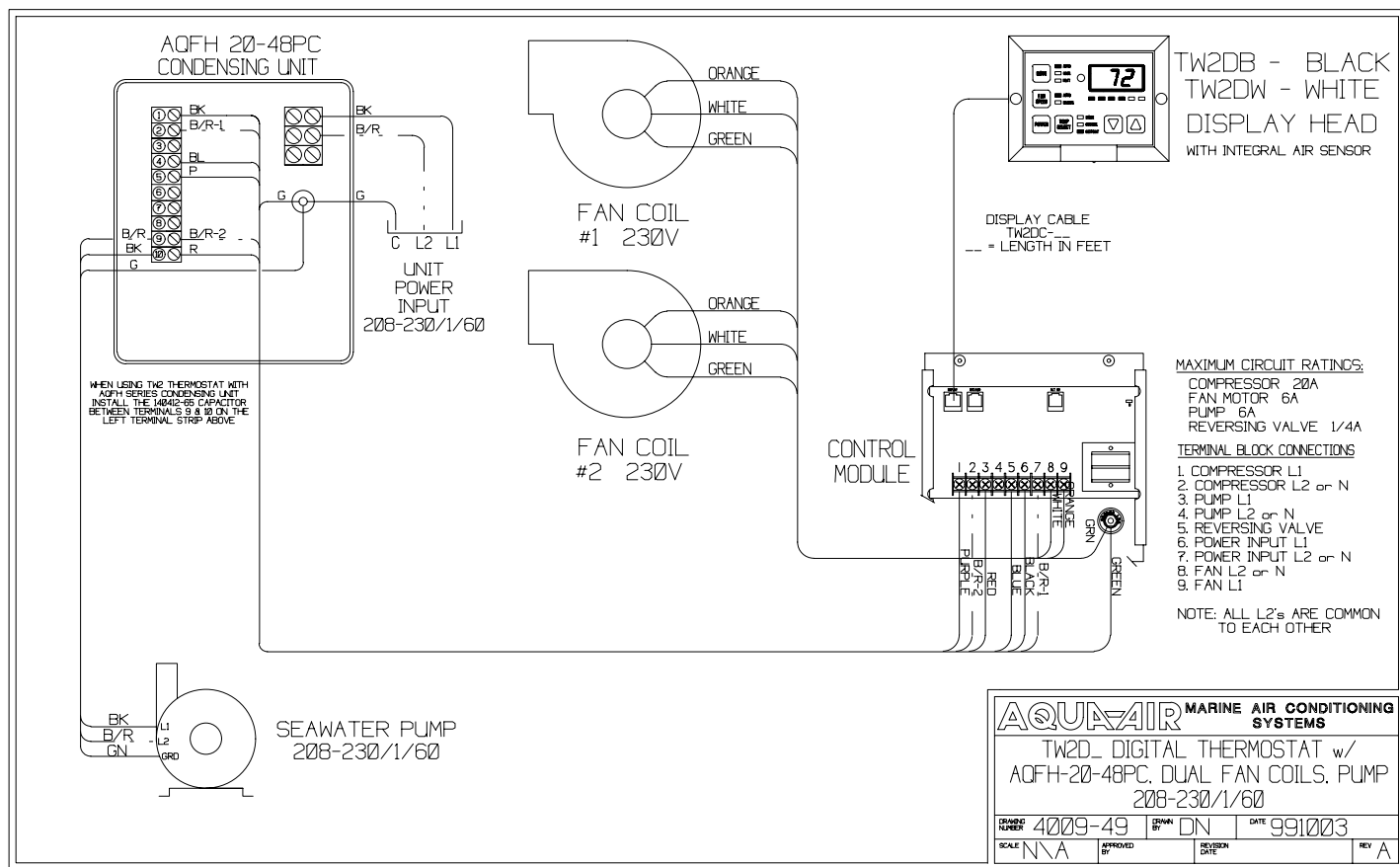


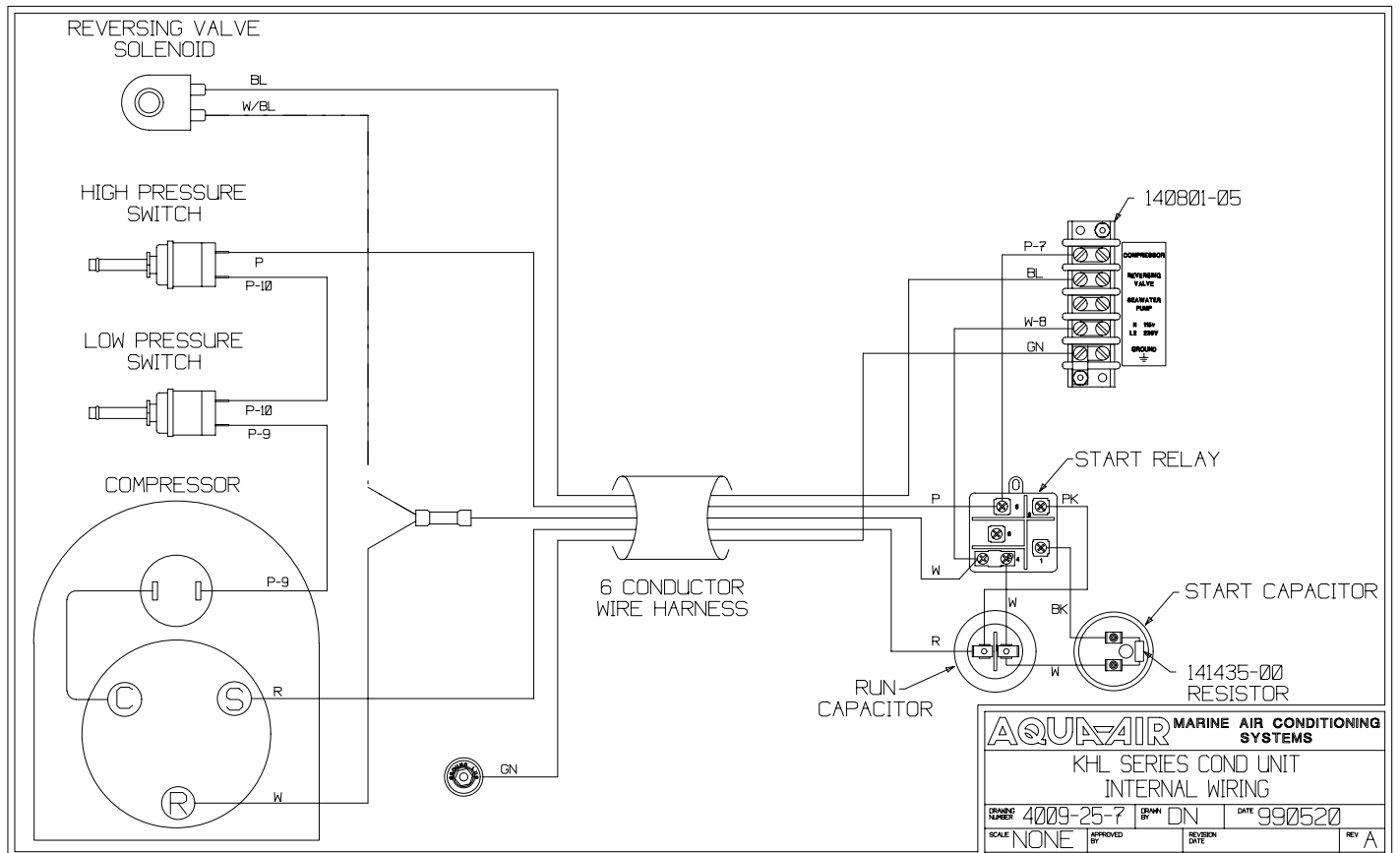
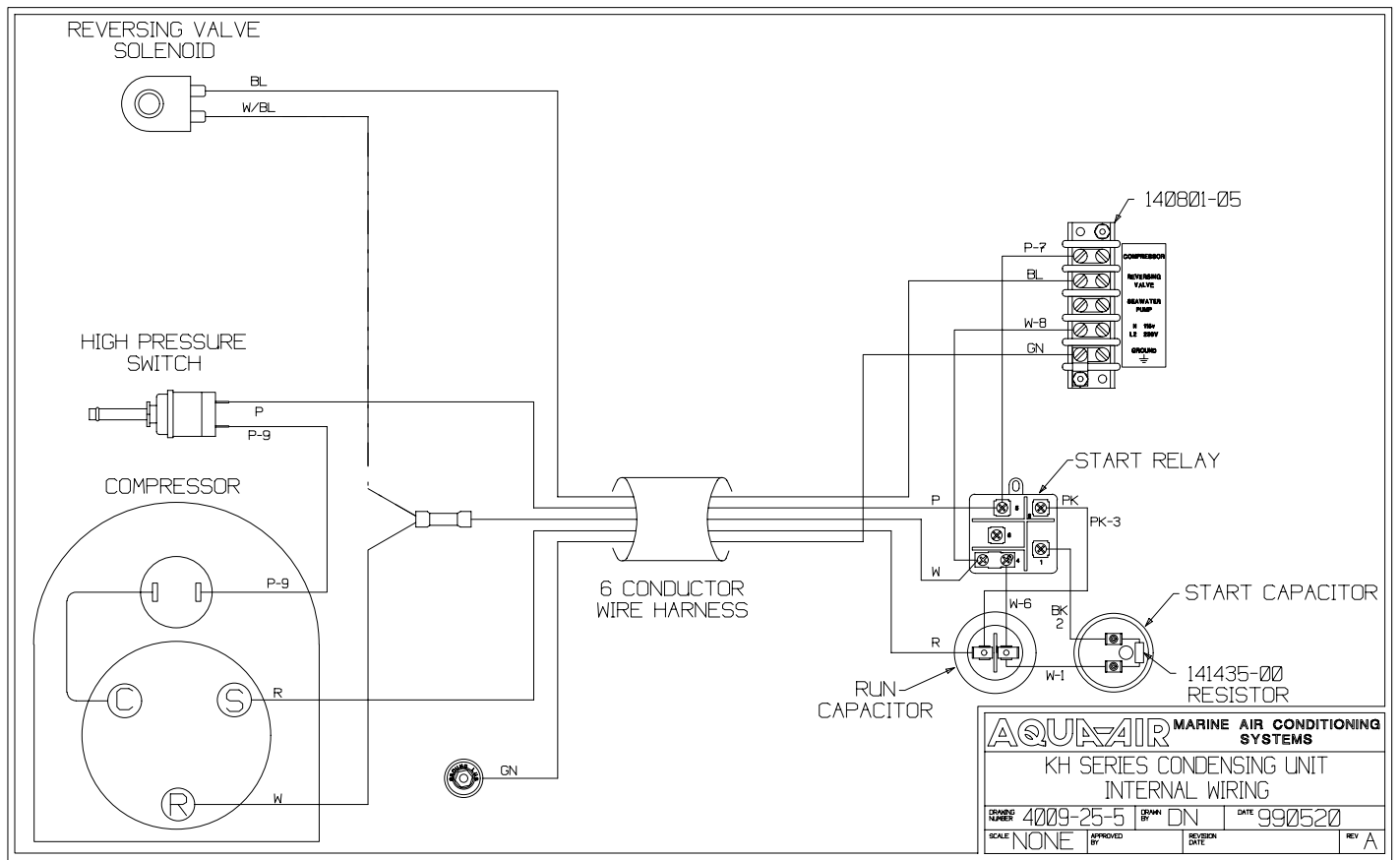


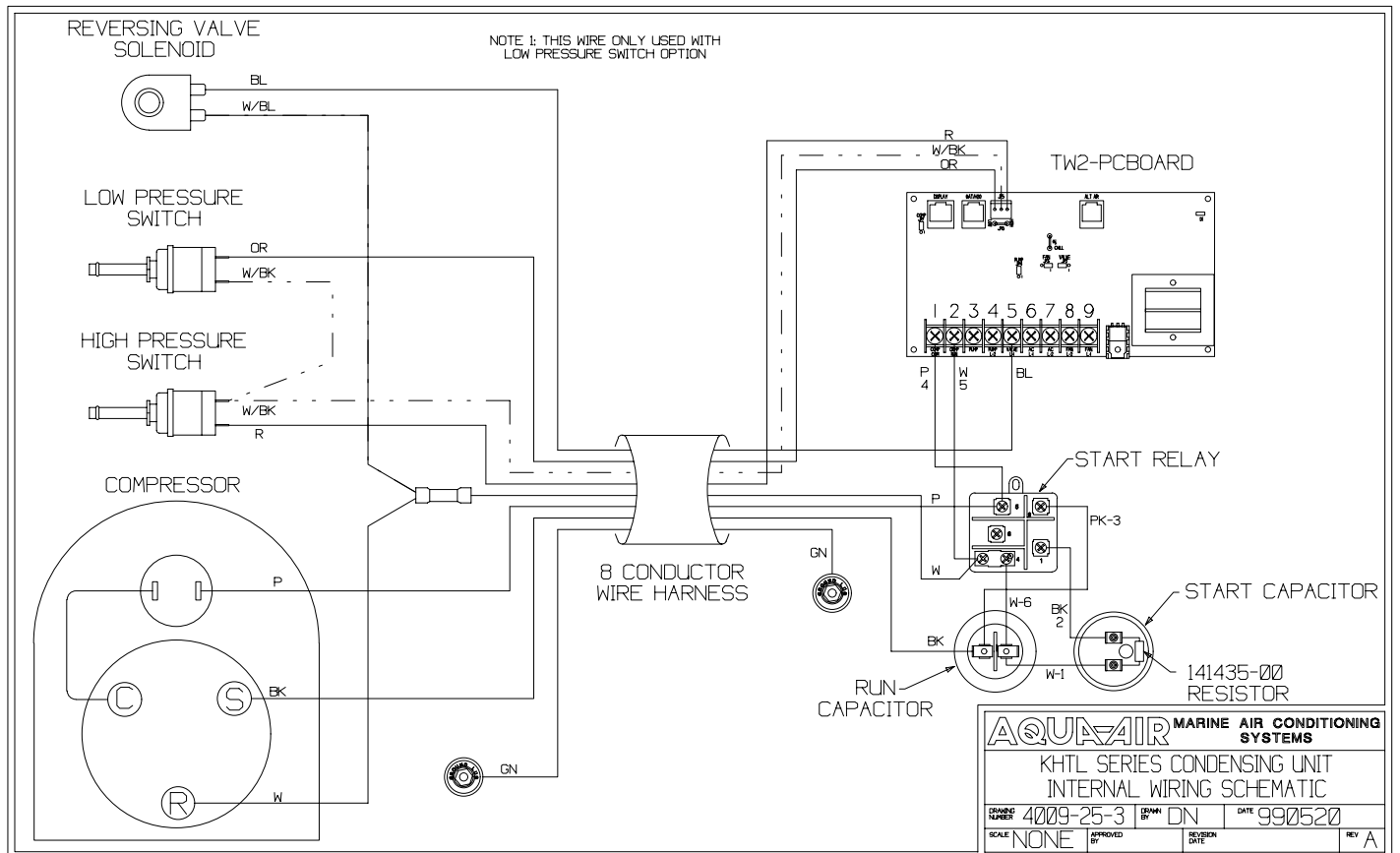
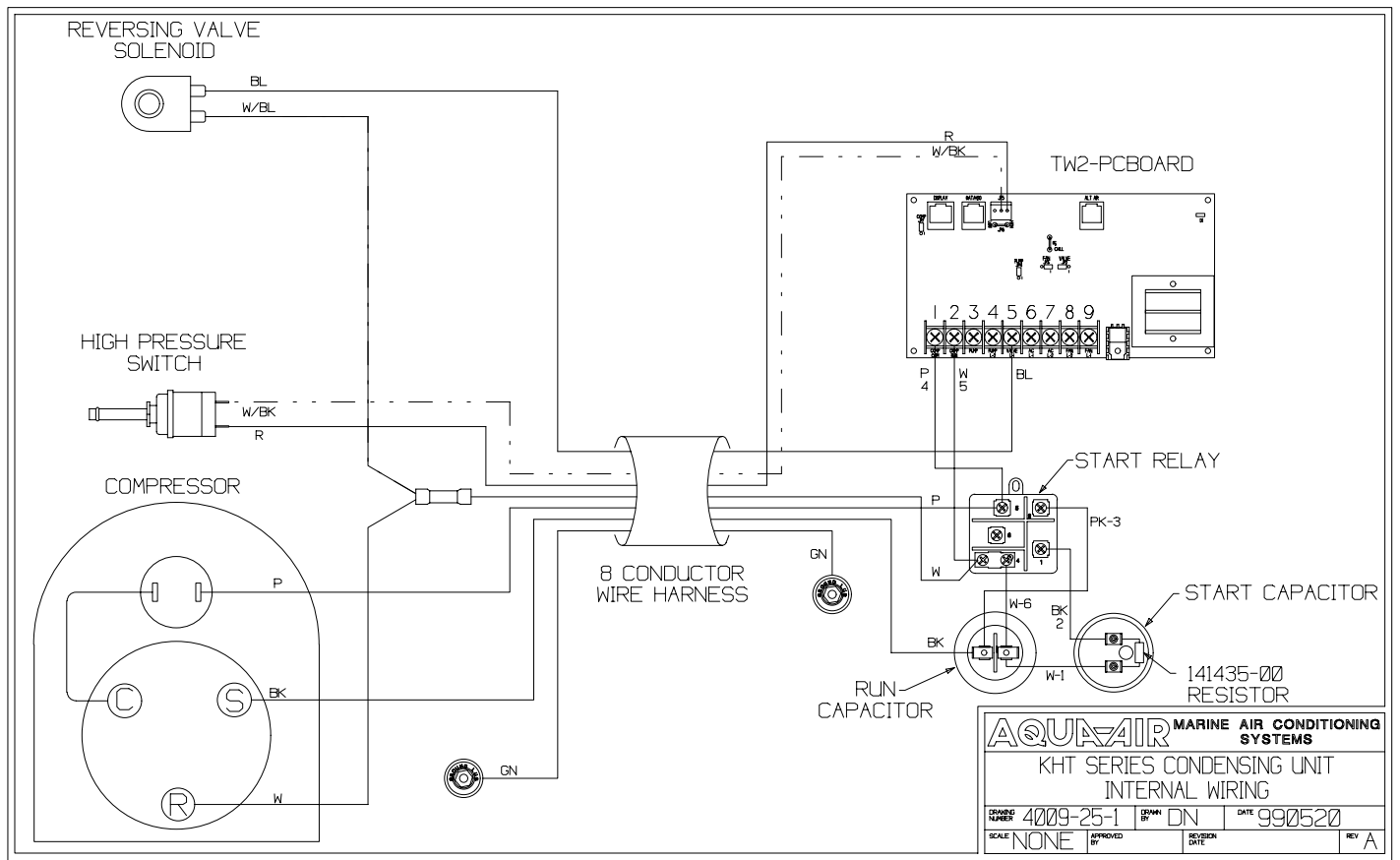


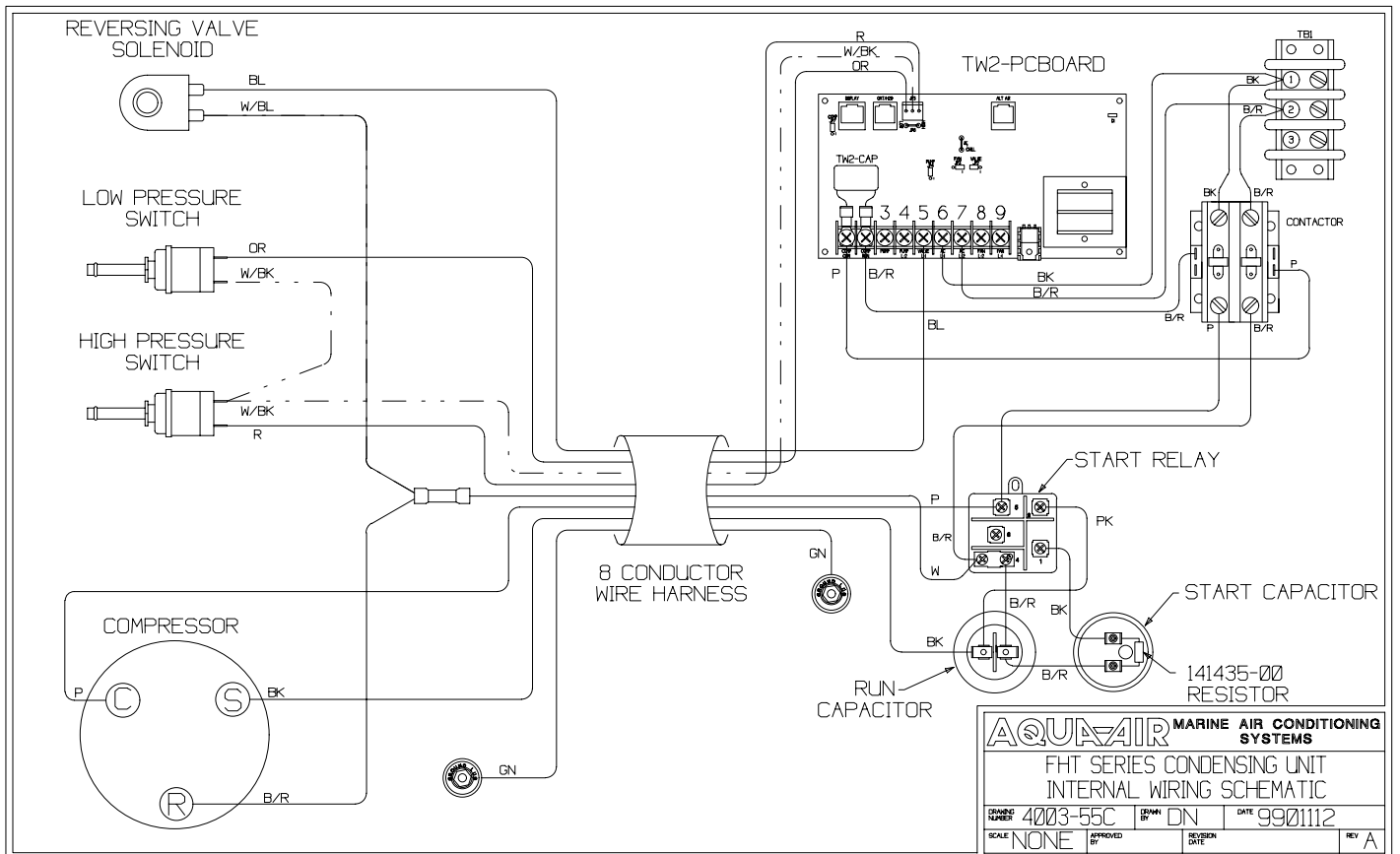
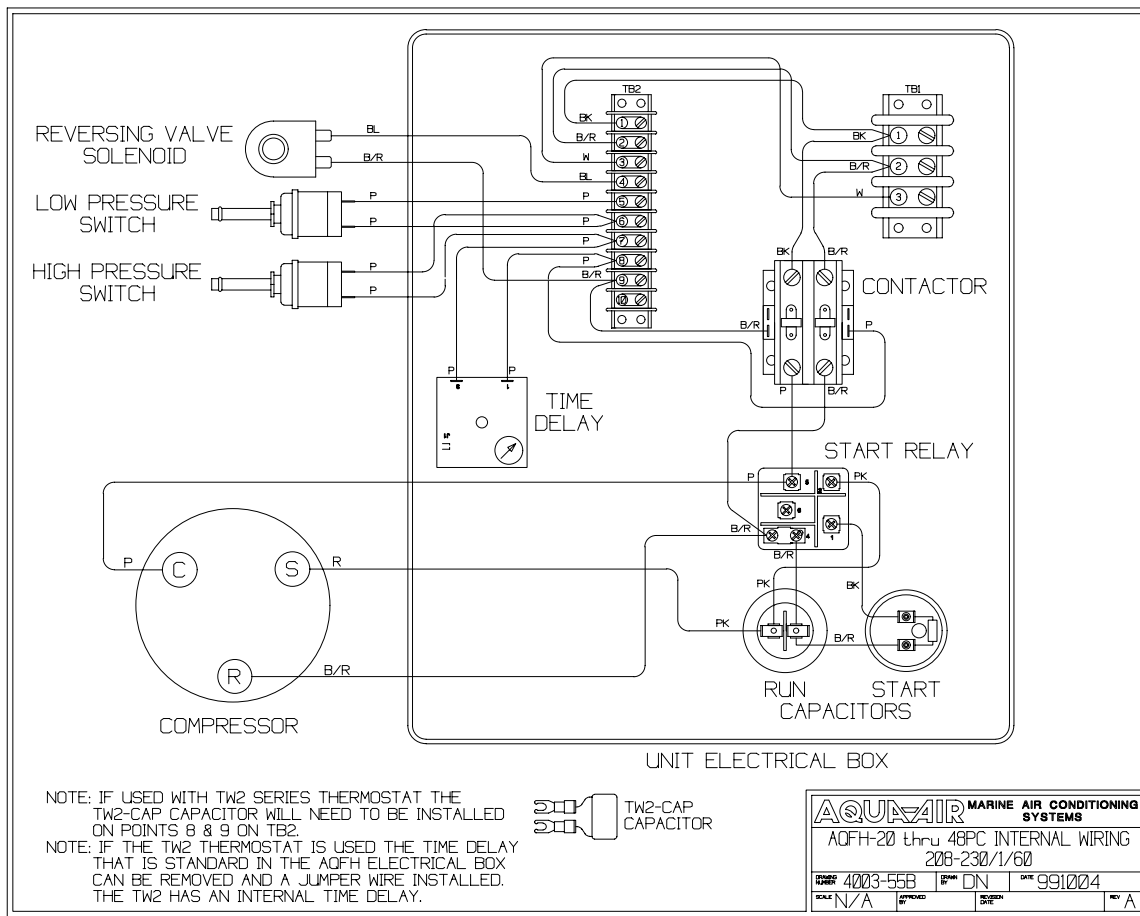


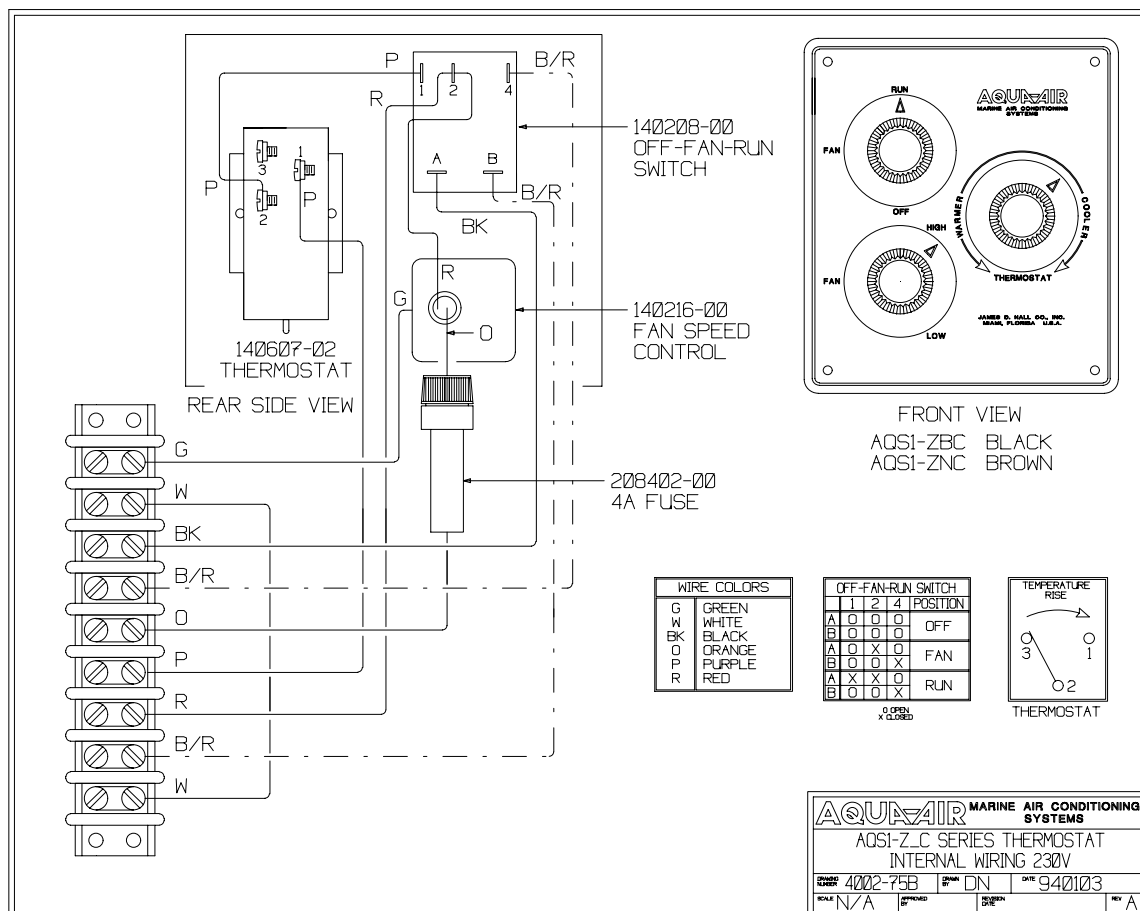
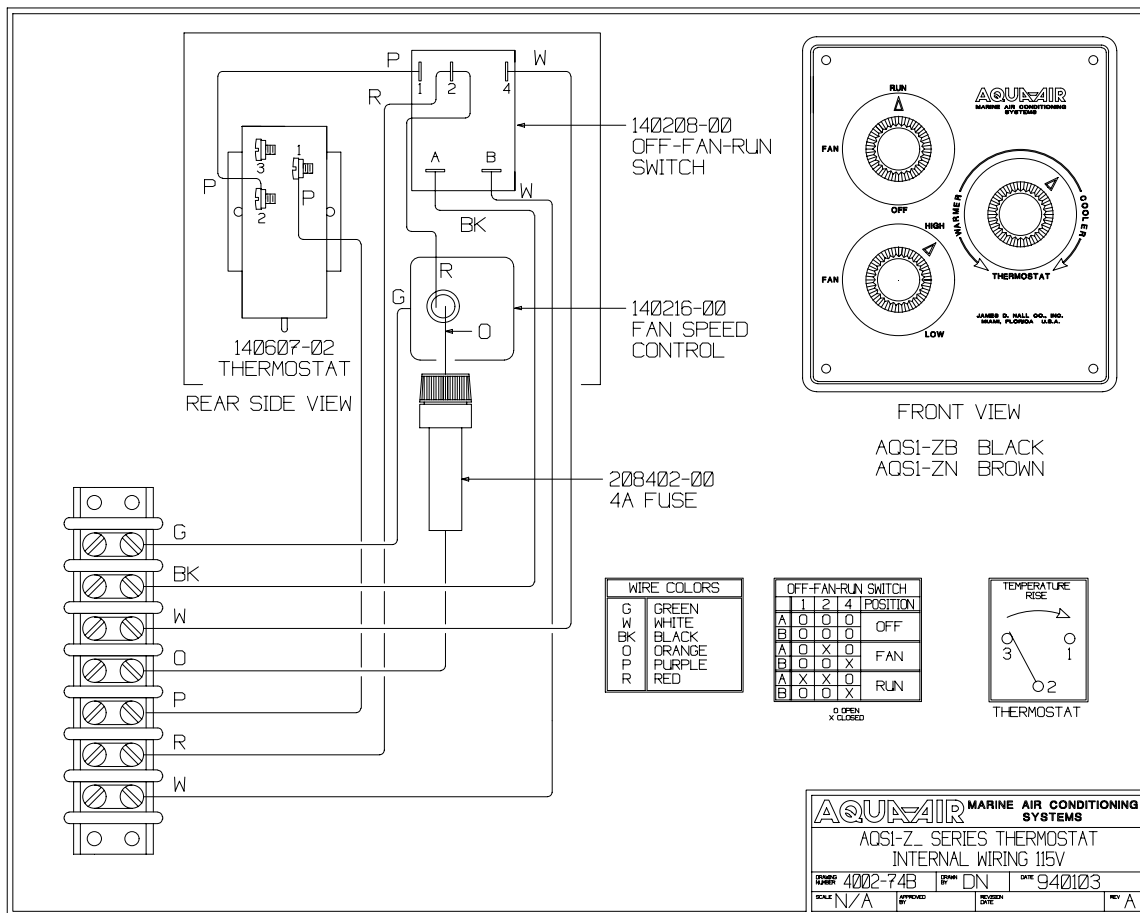


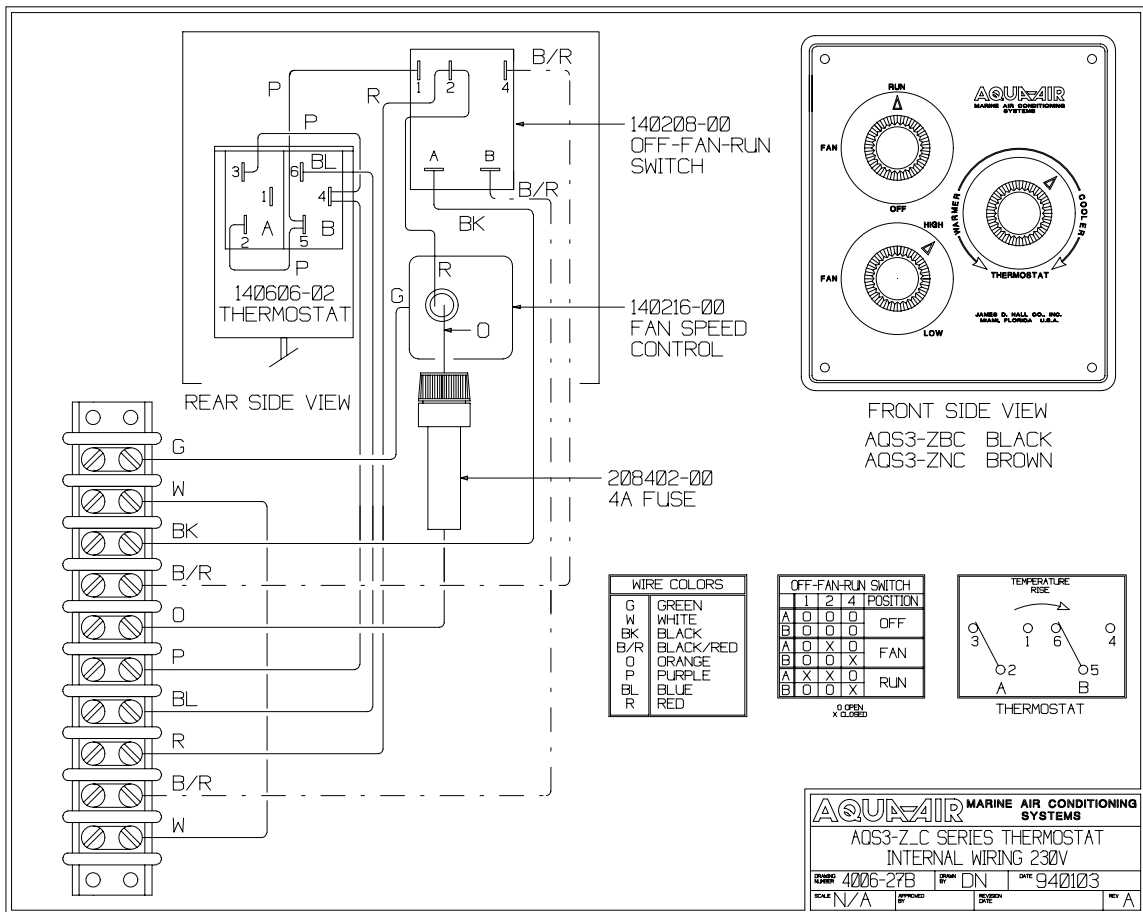
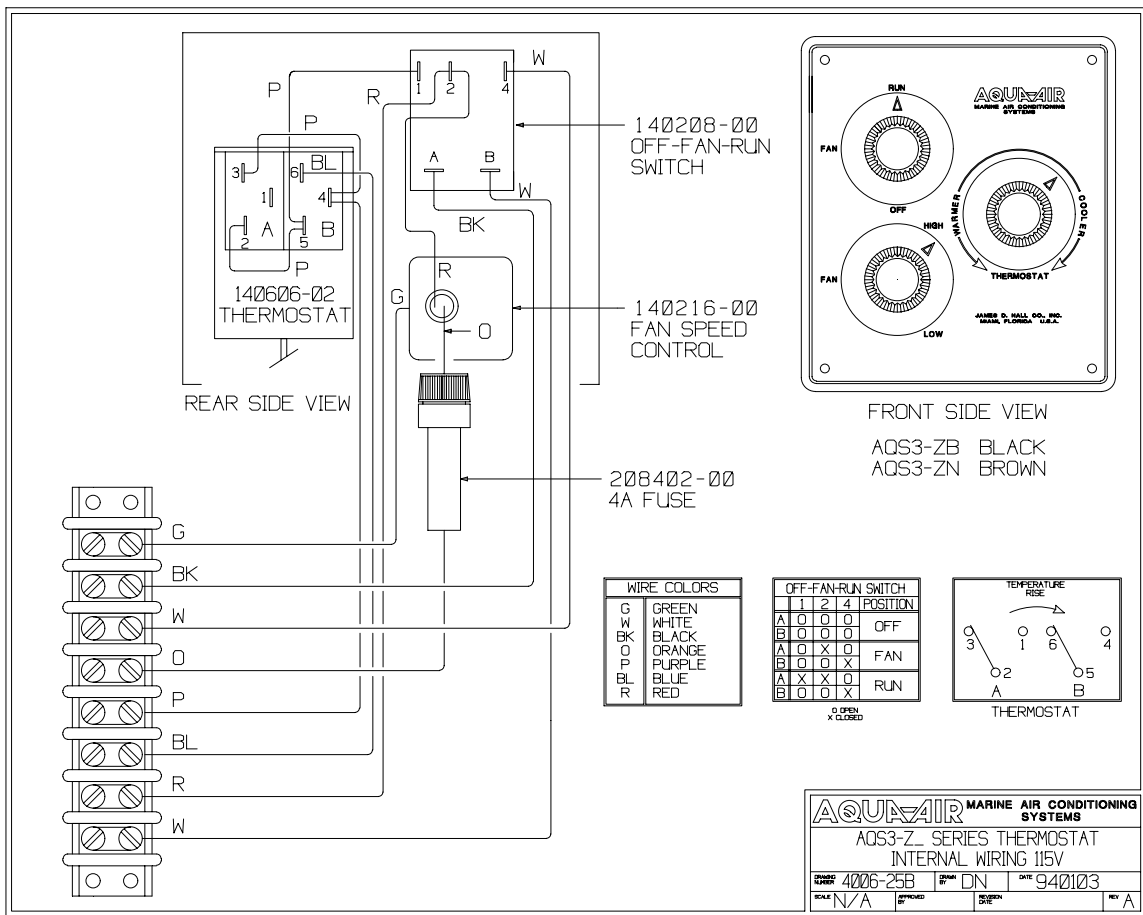


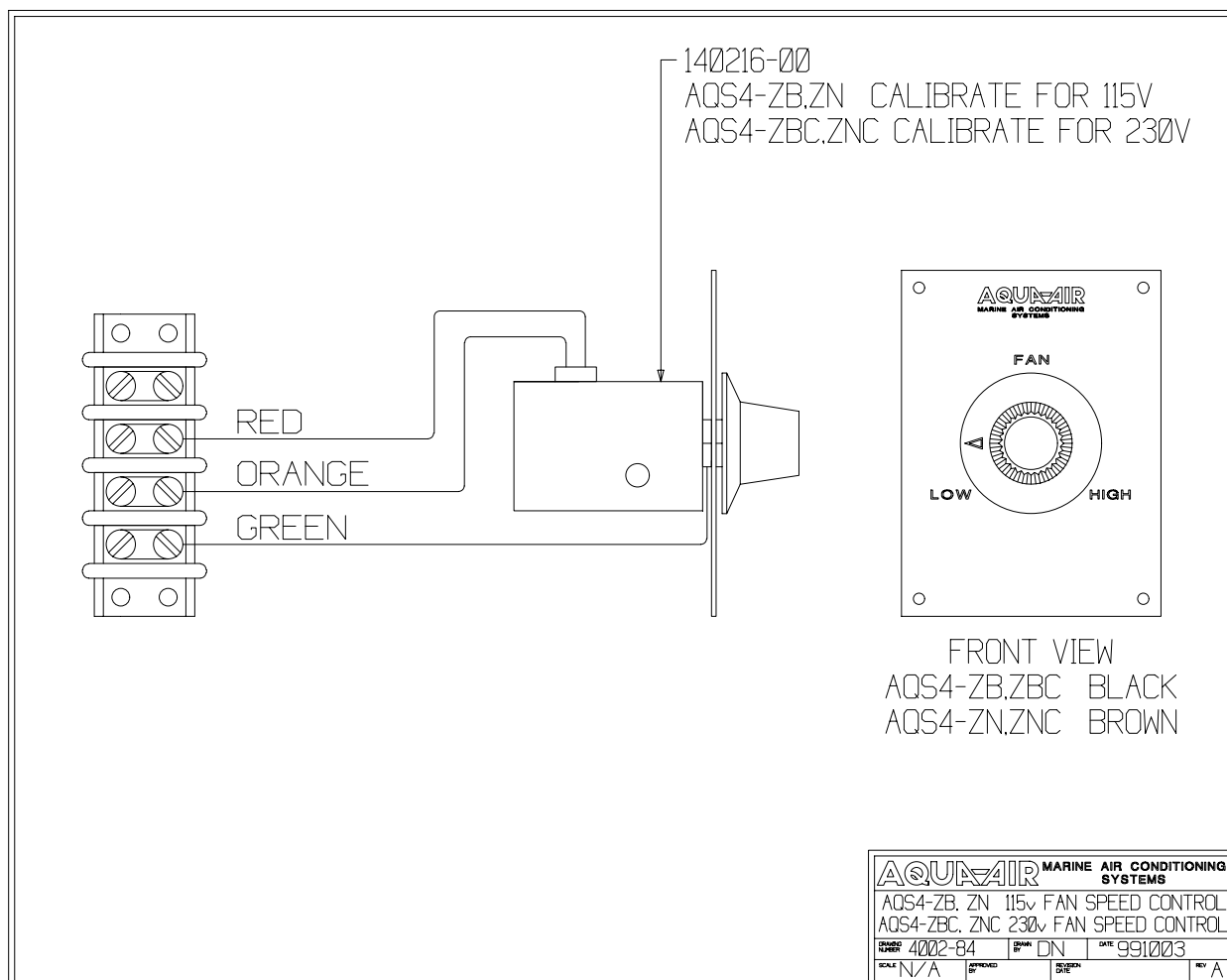














DX PRODUCT LIMITED WARRANTY PERIODS

The warranty period on all Aqua-Air DX (Direct Expansion) products is **one year**. Parts and labor are covered per warranty allowance schedules.

For new Aqua-Air DX system installations using **TW2** microprocessor controls, parts will be warranted for an additional year. All equipment in the system, including pumps, pump relays and associated parts will be covered for **two years**.

The TW2 microprocessor controls used in a retrofit on Aqua-Air or any other manufacturer's marine air conditioning equipment will carry a one year warranty. New TW2 controls or components of the microprocessor control system purchased to replace out of warranty controls or components will have a one year warranty.

Non-warranty replacement parts and components, other than TW2 controls or components, will be warranted for a period of 90 days. This warranty is for parts only, no labor is included. The exception to this category is replacement compressors which carry a one year warranty, including parts and labor from the date they were sold.

Parts and components supplied by Aqua-Air Manufacturing for replacement on any Aqua-Air unit under warranty will be warranted for the remainder of the original warranty period only.

Replacement parts or components used on competitors equipment will have a 90 day warranty. The exception is those parts used in the refrigeration circuit of any competitive brand of air conditioning equipment, which will carry no warranty.

All warranties begin when the customer takes possession of the equipment. The warranty is extended to all owners of the equipment commencing the date the original owner takes possession of it. Verification of original purchase will be required. All warranties are limited to the terms and periods set forth here. Any and all implied warranties are excluded.

Fuses and MOV's are used as safety devices to protect Aqua-Air equipment against over-voltage conditions caused by induced lightning or inductive switching environments. These are not covered under warranty.

Aqua-Air will repair or replace, at its option, components found to be defective due to faulty materials or workmanship, after the component has been examined by Aqua-Air or its authorized servicing dealer. Additionally, Aqua-Air will pay labor costs, as outlined in its Schedule of Limited Allowances, for the removal and replacement of the component. This limited warranty extends to Aqua-Air DX products that have been installed, operated and maintained in accordance with written guidelines available from Aqua-Air.

Aqua-Air reserves the right to change its warranty policies and procedures as well as its warranty allowances without notice.

Aqua-Air equipment is designed and manufactured for long term, trouble free operation when properly operated and maintained. It is strongly recommended that you read your owners manual and fully understand the operations of your Aqua-Air equipment. Any questions you have regarding the operations of your Aqua-Air system or warranty coverage can be directed to your authorized Aqua-Air dealer or to Tech Support at Aqua-Air Manufacturing (800) 457-3928.

G:\DX Dealer Handbook\80105-3a.WPD rev 1/00

i:\wordpfct\80105-1a,2a,3a.wpd

AQUA-AIR MANUFACTURING, division of the James D. Nall Co., Inc.
1050 East 9th Street, Hialeah, Florida 33010 U.S.A.
Ph. 305-884-8363 Fax 305-883-8549 E-mail sales@aquaaair.com