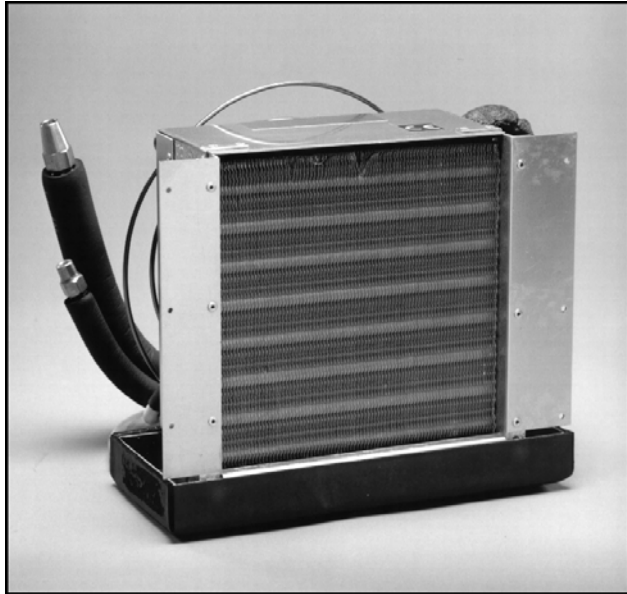


The AQB series cooling / heating units are compact, blow-thru type units that are designed to be mounted in the top of a locker, cabinet or closet at a minimum of 36" from the cabin floor. Cool air is discharged directly from the unit without the use of ducts. Return air is supplied to the unit from behind. The properly sized supply air grill is mounted in front of the unit.



AQB Series

Matching Remote Condensing Units

KH - compatible with AQS1 and AQS3 three knob mechanical controls.
 KHL - Includes low pressure switch.
 KHT - compatible with **TW2** Micro-processor control.
 KHTL - Includes low pressure switch.
 FH-24 - mechanical control compatible.
 FHT-24 - TW2 control compatible.
 AQFH- mechanical control compatible.
 AQFH-T - TW2 control compatible.

Standard Features:

- < Fan coil units in 4 - 16,000 BTU/H (1,008 - 4,032 KCAL/H) sizes.
- < Available in 115-1-50/60 input or 230-1-50/60 input models.
- < Can be used with either cooling only or reverse cycle (heat/cool) systems.
- < High capacity blade type fan is enclosed in a protective fan guard.
- < Mounting flanges are pre-installed.
- < Dual condensate drain outlets on the drain pan are factory connected into a common 1/2" hose barb tee for ease of installation.
- < Antifungal, antislush foam media is installed in the internally corrosion resistant coated drain pan.
- < All external condensate producing surfaces are covered with 1/8" thick foam insulation.
- < Refrigerant line connections are 18" long. Flare fittings with flare nuts are provided.
- < Designed for use with either KH, FH or AQFH Series condensing units.
- < Compatible with mechanical (AQS Series) or electronic TW2 controls.
- < Two year warranty when used with TW2 microprocessor control.

Technical Specifications

Model		AQB-04	AQ-05	AQB-07	AQB-08	AQB-10	AQB-12	AQB-16
Cooling Capacity	BTU/H	4,000	5,000	7,000	8,000	10,000	12,000	16,000
	KCAL/H	1,008	1,260	1,764	2,016	2,520	3,024	4,032
	TONS	0.33	0.42	0.58	0.67	0.83	1.00	1.33
Air Flow	CFM	135	135	270	270	330	400	533
	m ³ /HR	230	230	460	460	560	679	904
Weight	LBS.	10	10	10	15	15	17-1/2	20
	KGS.	5	5	5	7	7	8	9
Width	IN	12-1/2"	12-1/2"	12-1/2"	12-1/2"	12-1/2"	13"	15"
	MM	318	318	318	318	318	330	381
Depth	IN	7"	7"	8.5"	8.5"	8.5"	9.5"	10.5"
	MM	178	178	216	216	216	241	267
Height	IN	9"	9"	9-3/4"	11"	11"	12-1/2"	12-1/2"
	MM	229	229	248	279	279	318	318
Amperage Draw	115v	.45	.45	.5	.5	.8	1.9	1.9
	230v	.2	.2	.2	.2	.4	1.0	1.0
Power	Watts	52	52	58	58	92	219	219
Minimum Return Air Grille Size	IN ²	64	64	72	72	100	120	144
	CM ²	413	413	465	465	645	775	930
Minimum Supply Air Grille Size	IN ²	64	64	72	72	100	120	144
	CM ²	413	413	465	465	645	775	930
Flare Size	Suction	3/8"	3/8"	3/8"	3/8"	3/8"	3/8"	1/2"
	Liquid	1/4"	1/4"	1/4"	1/4"	1/4"	1/4"	1/4"

Add 'C' to end of the model for a 230 volt unit. Example AQC-12C

